

On Windows/Linux, consider using the Instrument Driver Finder (**Help>>Find Instrument Drivers**) to search for an instrument driver for your instrument.

Select **Help>>Show Context Help** and move the cursor over the VI icon to display help for this VI.

USB RAW VISA resource name
1%
Open Session Close Session

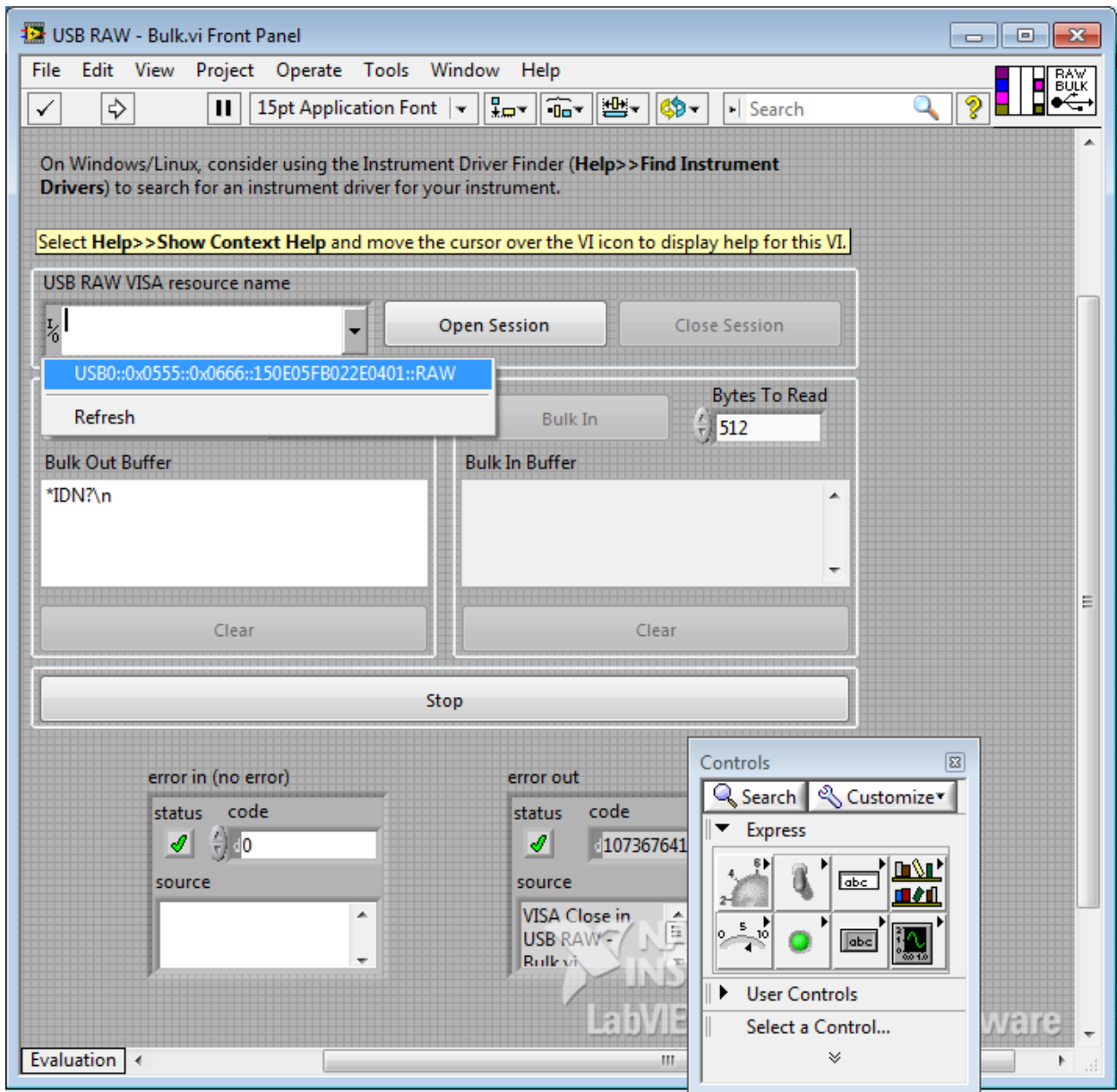
Bulk Out
Bulk Out Buffer
*IDN?\n
Clear

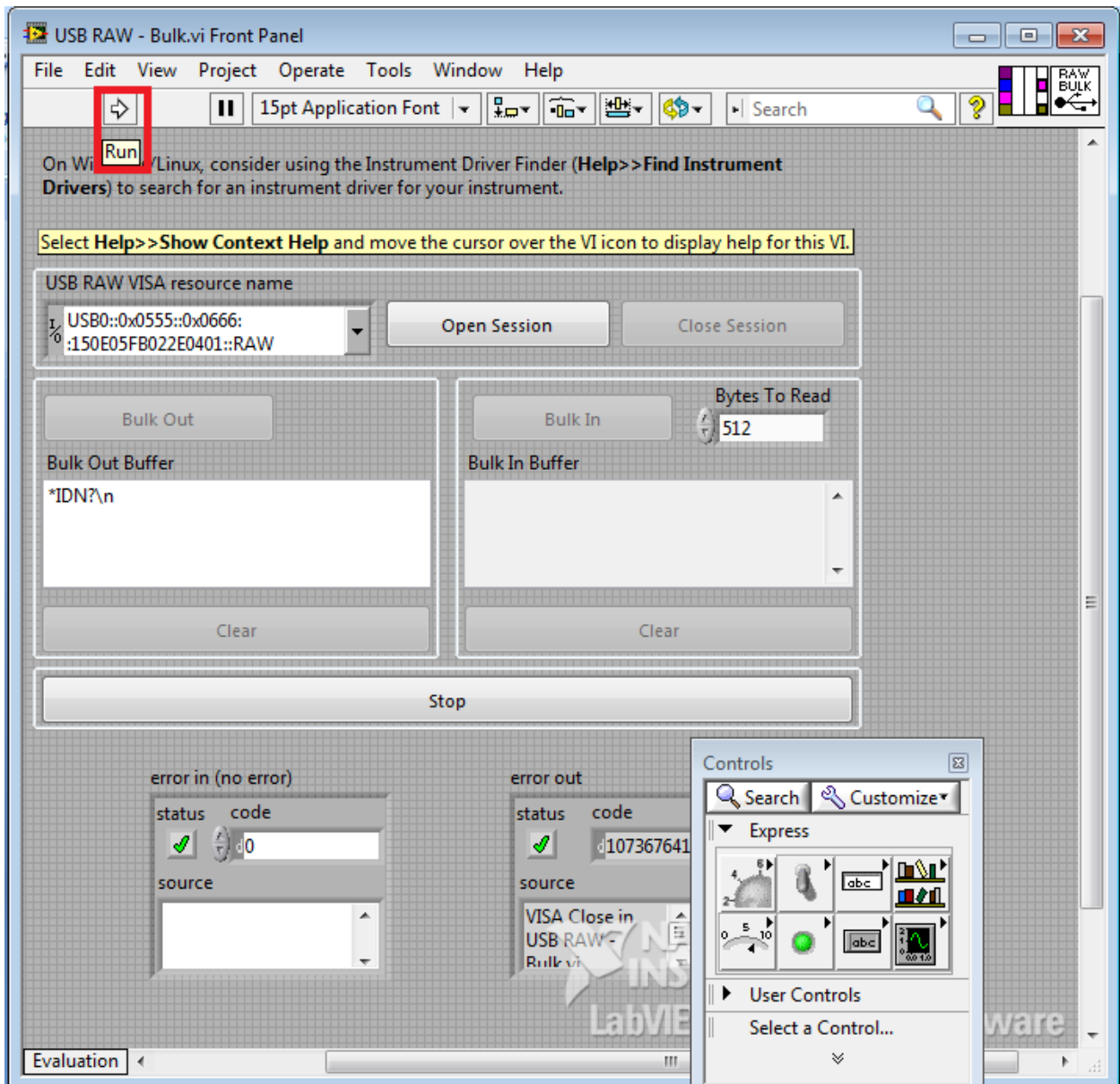
Bulk In Bytes To Read
512
Bulk In Buffer
Clear

Stop

error in (no error)
status code
source

Controls
Search Customize
Express
User Controls
Select a Control...





On Windows/Linux, consider using the Instrument Driver Finder (**Help>>Find Instrument Drivers**) to search for an instrument driver for your instrument.

Select **Help>>Show Context Help** and move the cursor over the VI icon to display help for this VI.

USB RAW VISA resource name
USB0::0x0555::0x0666:
:150E05FB022E0401::RAW

Open Session Close Session

Bulk Out

Bulk Out Buffer
1234567890

Clear

Bulk In Bytes To Read
512

Bulk In Buffer

Clear

Stop

error in (no error)

status	code
	0

source

error out

status	code
	0

source

