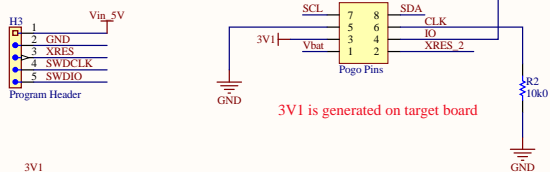
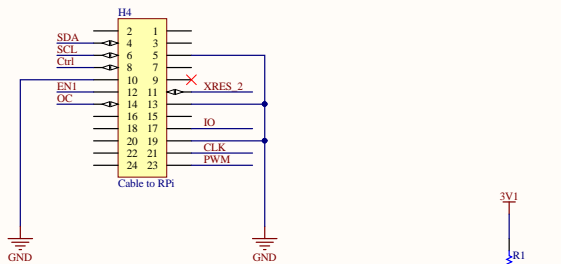
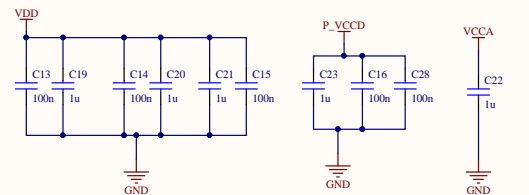
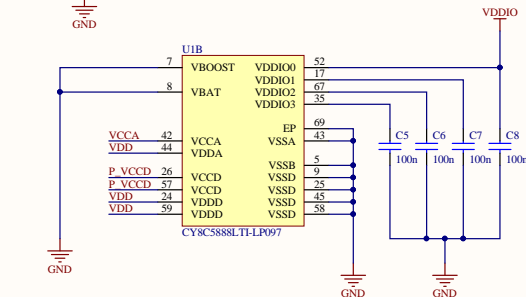
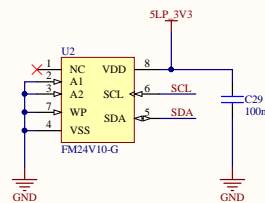
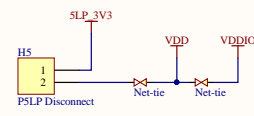
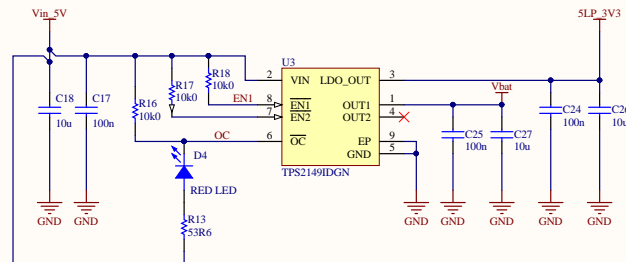


| | | | |
|-----------|----|----|----------|
| 3.3V | 1 | 2 | 5V |
| I2C 1 SDA | 3 | 4 | 5V |
| I2C 1 SCL | 5 | 6 | GROUND |
| GPIO4 | 7 | 8 | UART TXD |
| GROUND | 9 | 10 | UART RXD |
| GPIO 17 | 11 | 12 | GPIO 18 |
| GPIO 27 | 13 | 14 | GROUND |
| GPIO 22 | 15 | 16 | GPIO 23 |
| 3.3V | 17 | 18 | GPIO 24 |
| GPIO 10 | 19 | 20 | GROUND |
| GPIO 9 | 21 | 22 | GPIO 25 |
| GPIO 11 | 23 | 24 | GPIO 8 |
| GROUND | 25 | 26 | GPIO 7 |
| DNC | 27 | 28 | DNC |
| GPIO 5 | 29 | 30 | GROUND |
| GPIO 6 | 31 | 32 | GPIO 12 |
| GPIO 13 | 33 | 34 | GROUND |
| GPIO 19 | 35 | 36 | GPIO 16 |
| GPIO 26 | 37 | 38 | GPIO 20 |
| GROUND | 39 | 40 | GPIO 21 |



SDA & SCL Have Pull-Ups on Target Board

