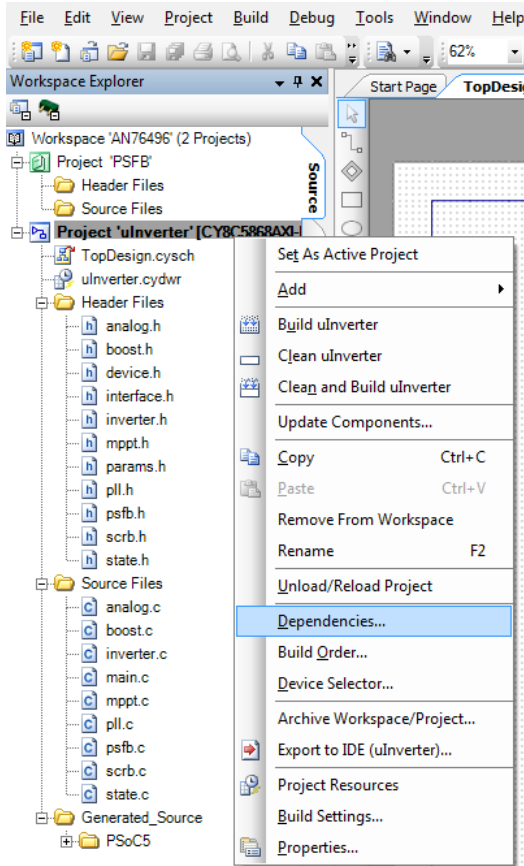


Appendix A: Using the PSFB Component in Your Project

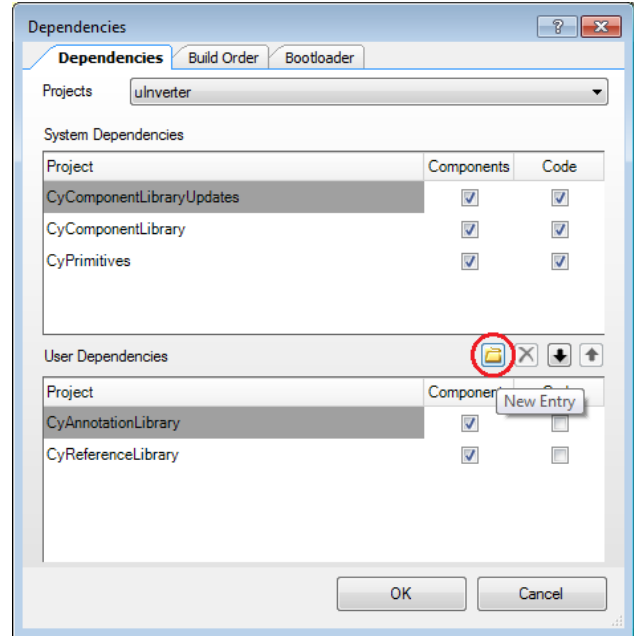
To add the PSFB component to your project, you must add it as a dependency. To do this, right-click on the project's name in Workspace Explorer of the PSoC Creator window. Select the Dependencies option in the pop-up menu, as shown in Figure 41.

Figure 41. Select Dependencies Option



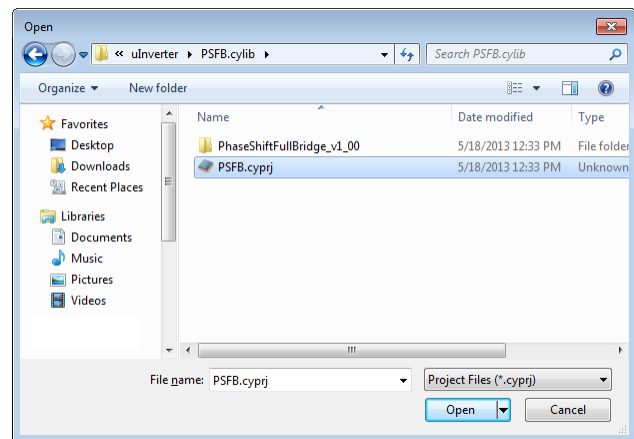
When the Dependencies dialog opens, click the folder icon for User Dependencies, as shown in Figure 42.

Figure 42. Adding a User Dependency



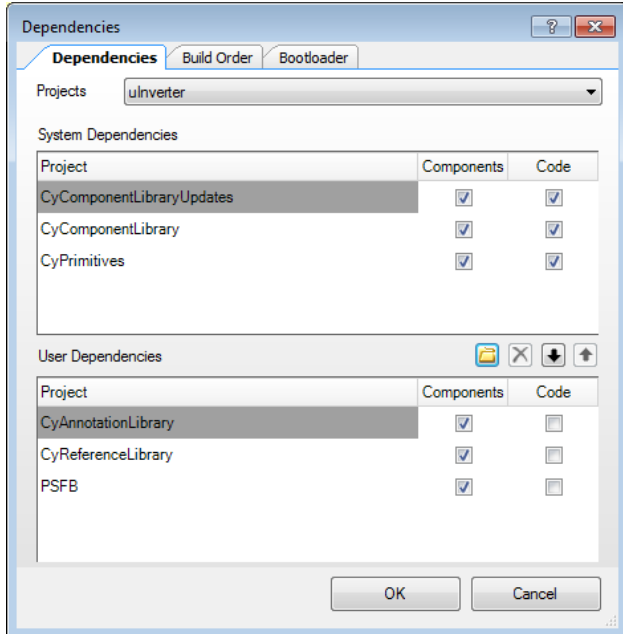
Navigate to the folder containing the library where the PSFB component resides. In this case, it is in the folder PSFB.cylib. Select the file PSFB.cypri, as Figure 43 shows.

Figure 43. Select the PSFB Component



After the PSFB component is added to the project, you will see it in the Dependencies tab, as [Figure 44](#) shows.

Figure 44. PSFB Component Added to Project



After the component is added to the project, it will appear in the Component Catalog of PSoC Creator, as [Figure 45](#) shows. It will be listed in the Appnote tab under Appnote Component Catalog/AN76439 entry.

Figure 45. PSFB Component in the Catalog

