

## EP61919

**Associated Part Families:** CY8C38xx/CY55xx

**Software:** PSoC<sup>®</sup> Creator™

**Related Hardware:** CY8CKIT-001

**Author:** Praveen Sekar

### Project Objective

This project demonstrates full wave rectifier implementation using mixer component.

### Overview

The sine wave is given to the input of the Multiplying mixer. The mixer operates:

- As an inverting amplifier when its local oscillator input is Low (-1).
- As a noninverting amplifier when its local oscillator input is High (+1).

The local oscillator input of the mixer receives the square wave of the same frequency as an input sine wave. A rectified wave is thus obtained at the mixer output.

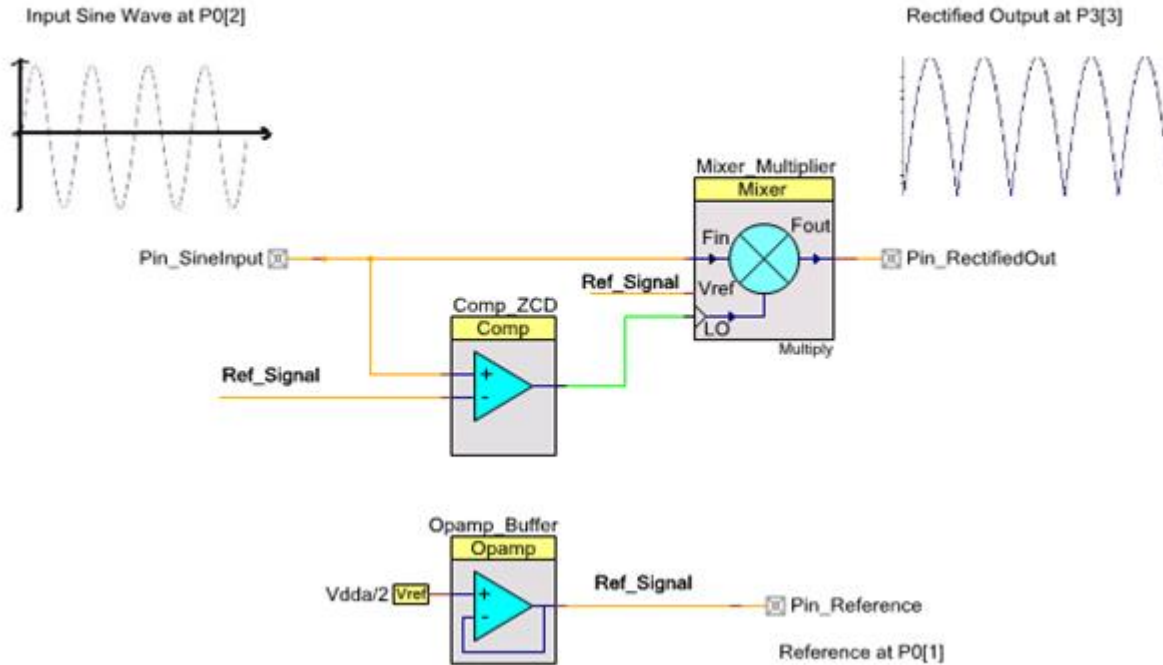
### Component List

Instance Name	Component Name	Component Category	Comments
Mixer_Multiplier	Mixer	Analog	Configured as Multiplier
Comp_ZCD	Comparator	Analog	--
Opamp_Buffer	Opamp	Analog → Amplifiers	The opamp buffers the reference voltage (Vdda/2) before it is brought out on the pin
Pin_SineInput	Analog Pin	Ports and Pins	--
Pin_RectifiedOut	Analog Pin	Ports and Pins	--
Pin_Reference	Analog Pin	Ports and Pins	--
Vdda/2	VRef	System	--

## Top Design

The following figure shows the components and their routing.

Mixer Multiplies input sine wave with square wave of same frequency (as sine wave) results in rectification. Comparator generates the square wave from the input sine signal.



The following figure shows the pin configuration (as in .cydwr file)

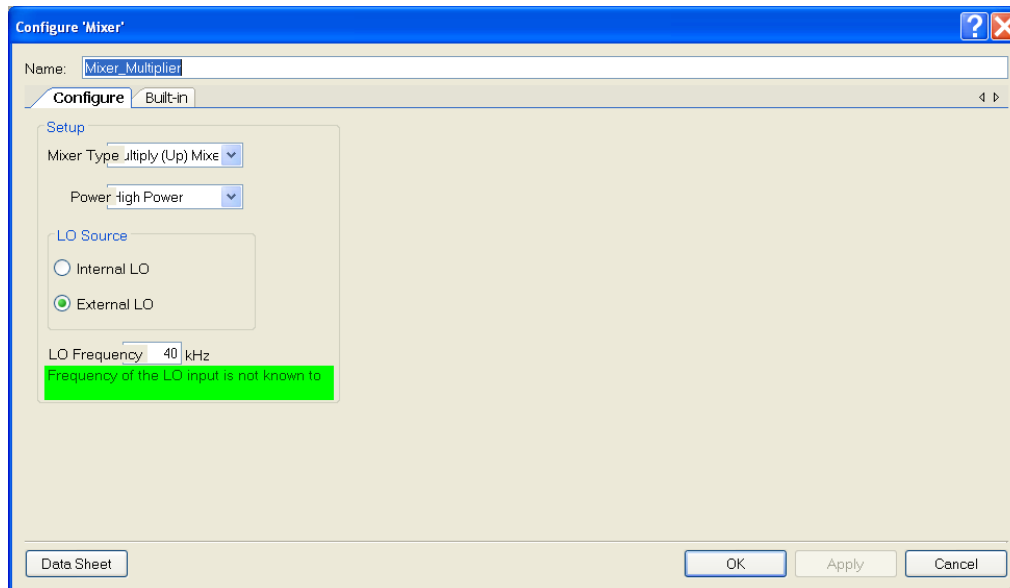
The screenshot shows the PINS configuration window for a CY8C3866AXI-040 microcontroller. The main window displays a grid of pins with their configurations. A table on the right provides a summary of the key configurations:

Alias	Name	Pin	Lock
<code>Pin_SineInput</code>	<code>P0[2]</code>	<input type="checkbox"/>	<input checked="" type="checkbox"/>
<code>Pin_RectifiedOut</code>	<code>P3[3]</code>	<input type="checkbox"/>	<input checked="" type="checkbox"/>
<code>Pin_Reference</code>	<code>P0[1]</code>	<input type="checkbox"/>	<input checked="" type="checkbox"/>

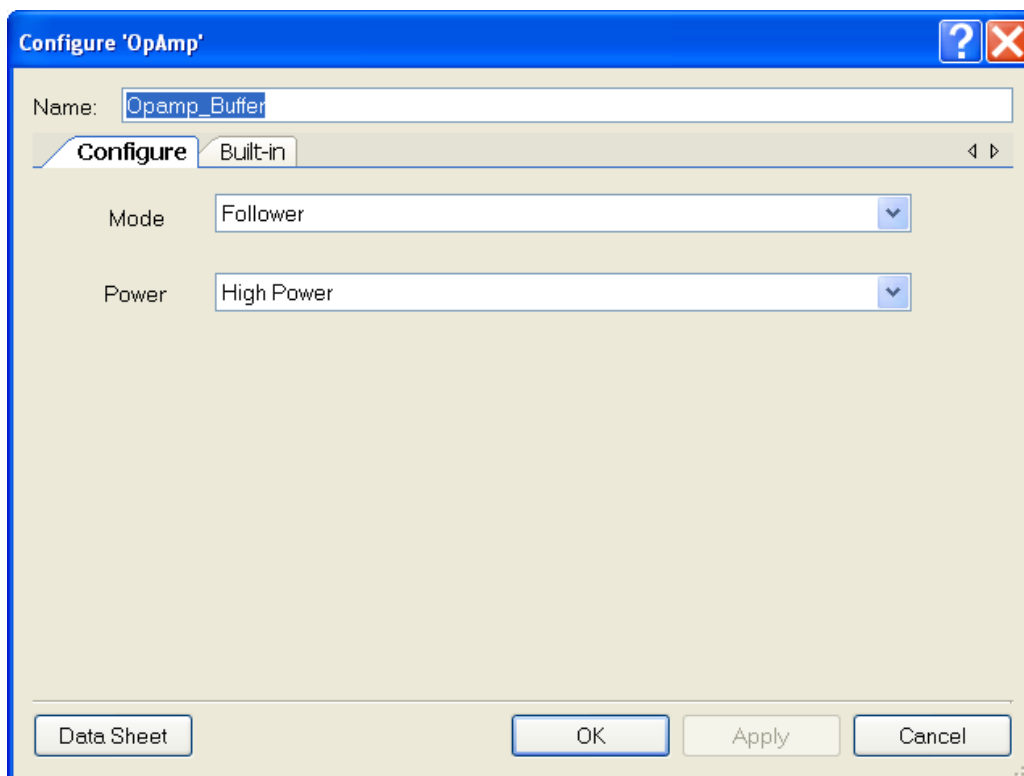
Other visible configurations in the table include `Pin_Reference` at `P0[1]`, `Pin_SineInput` at `P0[2]`, and `Pin_RectifiedOut` at `P3[3]`. The interface also shows various system settings like clocks, interrupts, and flash security.

## Component Configuration

### Mixer\_Multiplier

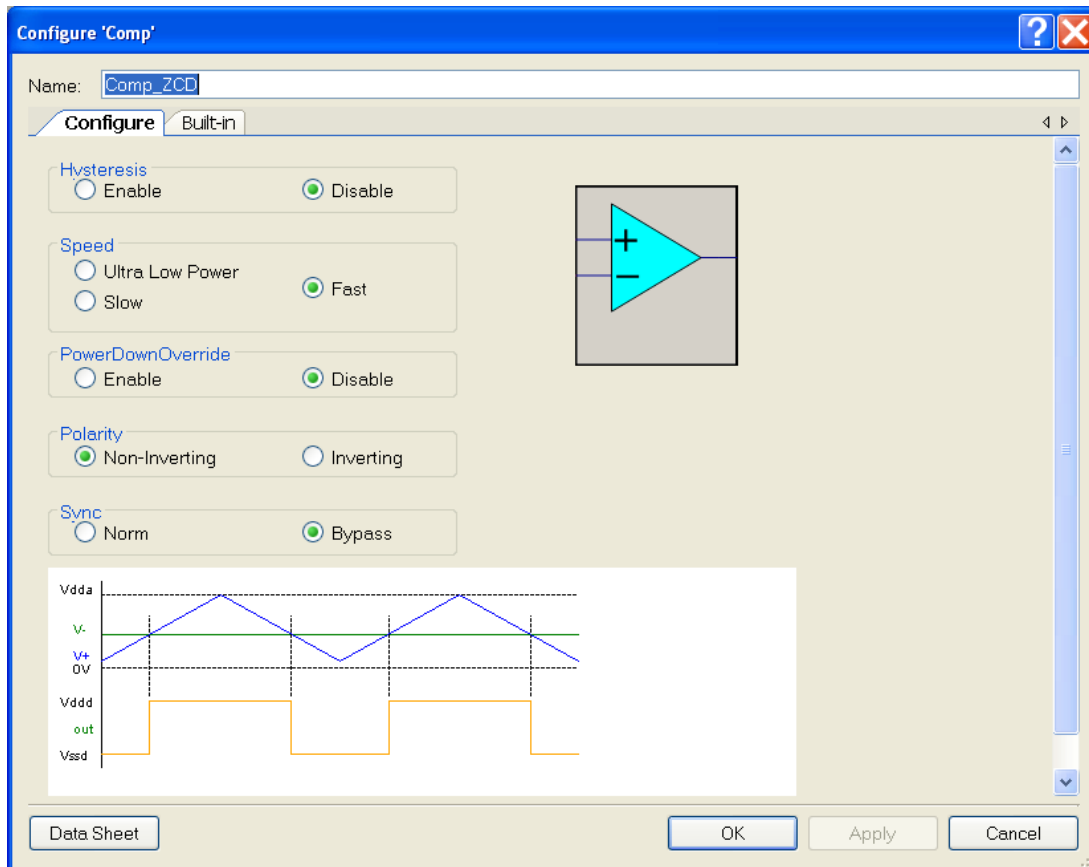


### Opamp\_Buffer



**Note** The Opamp component buffers the reference voltage ( $V_{dda}/2$ ) before it is brought out on the pin.

## Comp\_ZCD



## Design Wide Resources

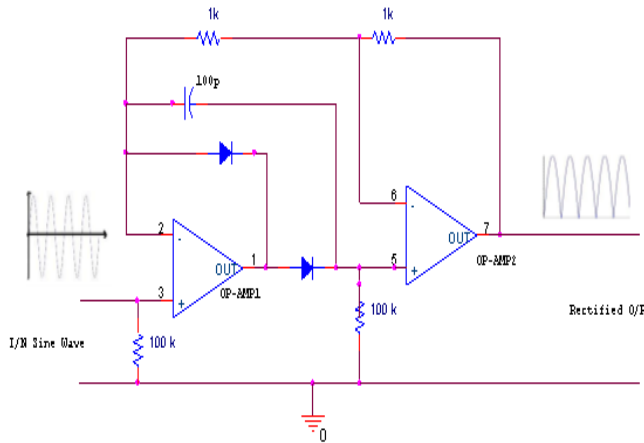
This project uses the default configuration. Refer to the .cydwr file for the default settings.

## Operation

### Introduction

Rectifiers are typically designed with opamps and discrete components. An example is shown in [Figure 1](#). These rectifiers can be implemented in PSoC 3 and PSoC 5 using PSoC 3 and PSoC 5 opamps. However, PSoC's unique configurable and programmable analog peripherals allow the construction of rectifiers without using any external components.

Figure 1. Typical Implementation of a Precision Rectifier



A sine wave, when multiplied with a square wave of the same frequency and phase as the sine wave, results in rectification.

Input the sine wave to the mixer input. A square wave of the same frequency is obtained by passing the input sine wave through a comparator. Feed the output of the comparator into the local oscillator input of the mixer. The mixer takes care of the multiplication and produces a rectified output.

A multiplying mixer multiplies by acting as a unity gain amplifier, alternating its gain between +1 and -1 based on the local oscillator input level. The mixer:

- Acts as an inverting amplifier when its local oscillator input is low (-1).
- Acts as a non-inverting amplifier when its local oscillator input is high (+1).

Figure 2 shows the block diagram of the implementation and Figure 3 illustrates the timing diagram of the input signal, comparator output, and mixer output. As shown, when the sine wave goes below zero, the comparator output also goes low; this sets the gain to -1. Therefore, the negative half of the incoming sine wave is always given a gain of -1 and the positive half is given a gain of +1, leading to rectification.

Figure 2. Block Diagram of Mixer Implementation Method

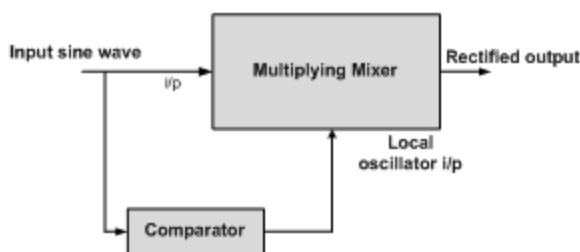
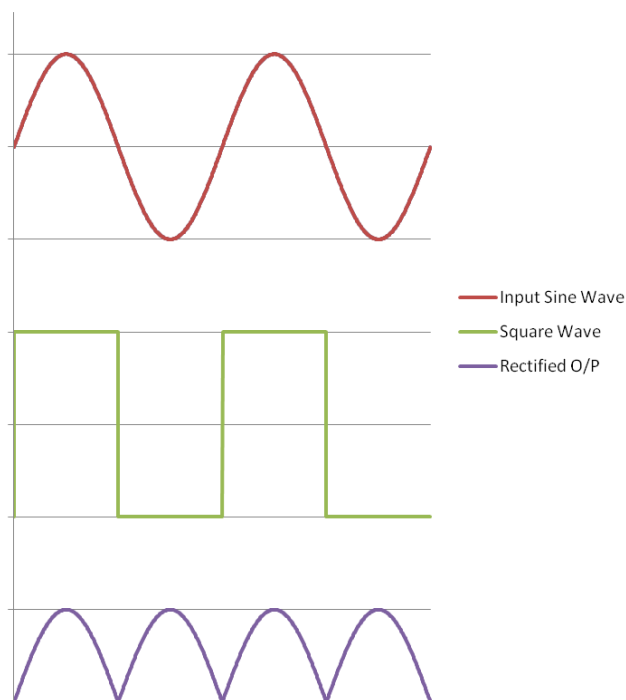


Figure 3. Timing Diagram of Mixer Implementation Method

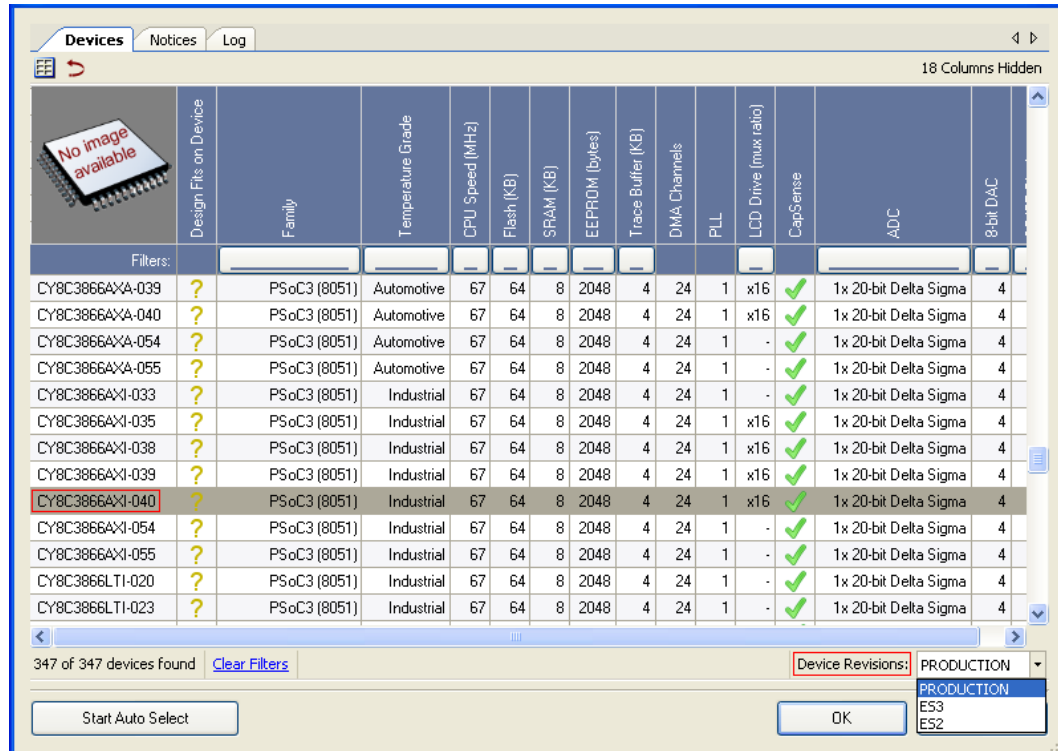


## Hardware Connections

- The external sine input signal needs to be reference with respect to  $V_{dda}/2$ . So, apply 1-V amplitude and 1-kHz sine wave signal to Pin P0[2] with respect to Pin P0[1]. Connect the signal generator output signal to P0[2] and the signal generator ground to Pin P0[1].
- Connect pin P0[2] and P3[3] to the oscilloscope to view input signal and rectified output signal respectively.
- For rest of the basic settings of the DVK, refer to the CY8CKIT-001 PSoC Development Kit Board Guide, which is supplied with the kit.

## Output

- Use the device selector window (Project->Device Selector) in PSoC Creator to select the appropriate device and device revision. If you are using a PSoC 3 device (for example, CY8C3866AXI-040) with production revision, then use the following selection.



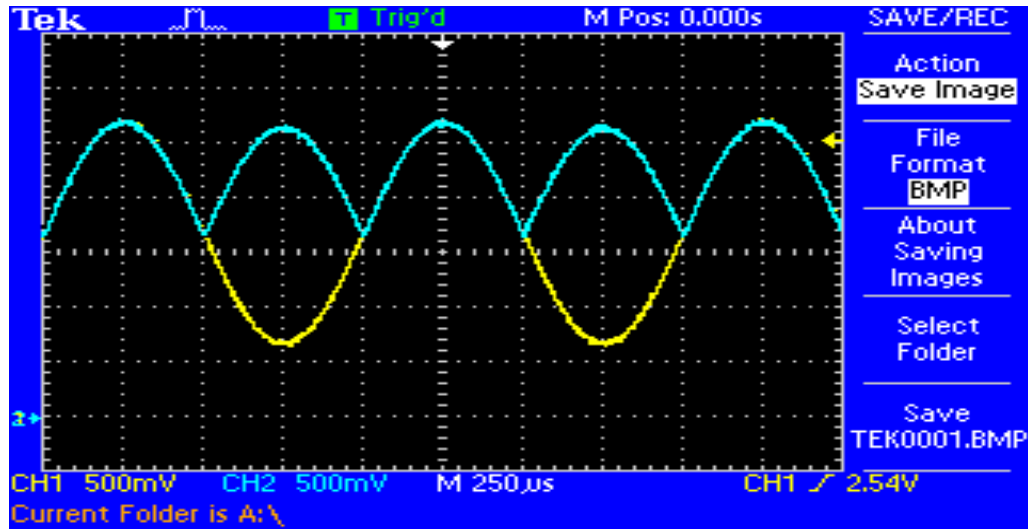
Similarly, select an appropriate device number to work with the PSoC 5 Device family (for example, CY8C5588AXI-060).

**Note** For engineering samples, device revision is marked on the package as part of the device number. Production silicon will not have an ES marking.

## Build the Project and Program the Device

Press SW4 to reset the device. (Reset Switch)

The following figure shows the Input Signal and Rectified Output.





## Document History

**Document Title: Precision Rectifier Using Mixer – PSoC® 3/PSoC 5**

**Document Number: 001-61919**

Revision	ECN	Orig. of Change	Submission Date	Description of Change
**	2942288	PFZ	06/20/2010	New Example Project
*A	3152653	PFZ	01/24/2011	Added Introduction to Operation section.

PSoC is a registered trademark of Cypress Semiconductor Corp. Programmable System-on-Chip and PSoC Creator are trademarks of Cypress Semiconductor Corp. All other trademarks or registered trademarks referenced herein are the property of their respective owners.

Cypress Semiconductor  
 198 Champion Court  
 San Jose, CA 95134-1709  
 Phone: 408-943-2600  
 Fax: 408-943-4730  
<http://www.cypress.com/>

© Cypress Semiconductor Corporation, 2011. The information contained herein is subject to change without notice. Cypress Semiconductor Corporation assumes no responsibility for the use of any circuitry other than circuitry embodied in a Cypress product. Nor does it convey or imply any license under patent or other rights. Cypress products are not warranted nor intended to be used for medical, life support, life saving, critical control or safety applications, unless pursuant to an express written agreement with Cypress. Furthermore, Cypress does not authorize its products for use as critical components in life-support systems where a malfunction or failure may reasonably be expected to result in significant injury to the user. The inclusion of Cypress products in life-support systems application implies that the manufacturer assumes all risk of such use and in doing so indemnifies Cypress against all charges.

This Source Code (software and/or firmware) is owned by Cypress Semiconductor Corporation (Cypress) and is protected by and subject to worldwide patent protection (United States and foreign), United States copyright laws and international treaty provisions. Cypress hereby grants to licensee a personal, non-exclusive, non-transferable license to copy, use, modify, create derivative works of, and compile the Cypress Source Code and derivative works for the sole purpose of creating custom software and or firmware in support of licensee product to be used only in conjunction with a Cypress integrated circuit as specified in the applicable agreement. Any reproduction, modification, translation, compilation, or representation of this Source Code except as specified above is prohibited without the express written permission of Cypress.

Disclaimer: CYPRESS MAKES NO WARRANTY OF ANY KIND, EXPRESS OR IMPLIED, WITH REGARD TO THIS MATERIAL, INCLUDING, BUT NOT LIMITED TO, THE IMPLIED WARRANTIES OF MERCHANTABILITY AND FITNESS FOR A PARTICULAR PURPOSE. Cypress reserves the right to make changes without further notice to the materials described herein. Cypress does not assume any liability arising out of the application or use of any product or circuit described herein. Cypress does not authorize its products for use as critical components in life-support systems where a malfunction or failure may reasonably be expected to result in significant injury to the user. The inclusion of Cypress' product in a life-support systems application implies that the manufacturer assumes all risk of such use and in doing so indemnifies Cypress against all charges.

Use may be limited by and subject to the applicable Cypress software license agreement.