

Objective

This code example demonstrates how fixed-function PWMs operate in PSoC® 5LP.

Overview

This is a straightforward example that demonstrates the use of a fixed-function PWM. The PWM is set up to output a 50 percent duty cycle digital signal with a period of 1 second. The signal can be used to drive an LED for visual testing of the PWM output. A switch is routed into the kill input of the PWM. When the switch is pressed, the PWM output is shut OFF.

Requirements

Tool: PSoC Creator™ 4.2

Programming Language: C (Arm® GCC 5.4.1)

Associated Parts: PSoC 5LP parts

Related Hardware: CY8CKIT-059, CY8CKIT-001, CY8CKIT-050

Hardware Setup

If using the CY8CKIT-059 PSoC 5LP Prototyping Kit, no external hardware connections are required. If using a different kit or hardware platform, two connections are required. An SPST switch needs to be connected to P2[2] to enable the kill functionality. The switch should be open when not pressed and should short the pin to ground when pressed. P2[1] should be connected to an LED to view the PWM output. An oscilloscope can also be used to view the output if an LED is not available.

If you are not using CY8CKIT-059, you may need to target a different PSoC device. To do so, right-click the project in the Workspace Explorer and select **Device Selector**. Select the appropriate PSoC device for your hardware platform.

Software Setup

None.

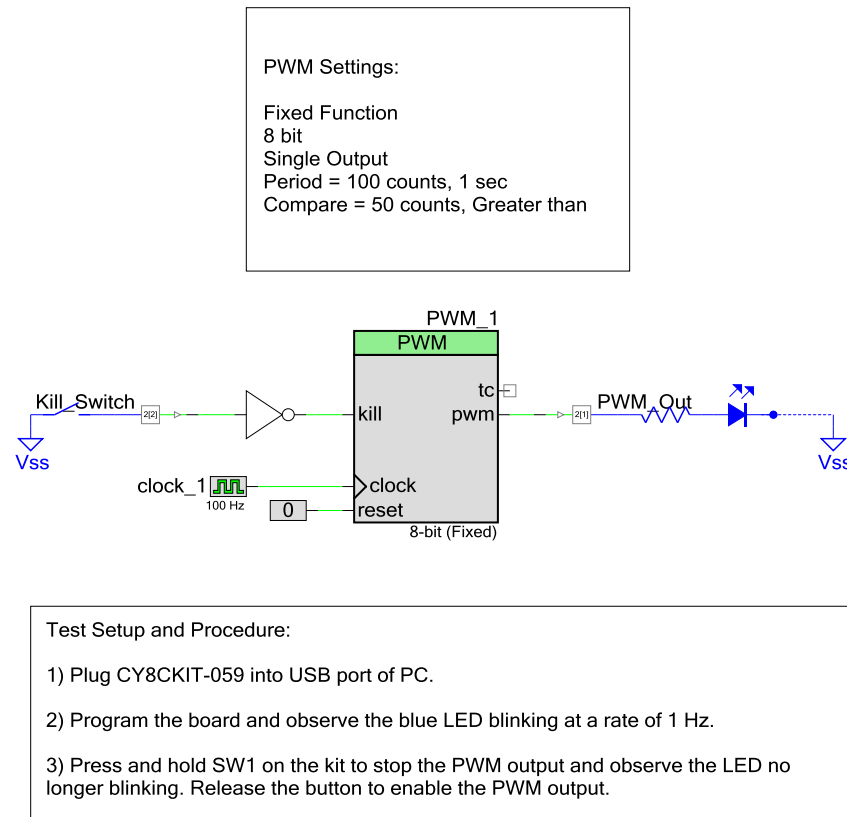
Operation

After you program the device, the PWM will start generating its output signal. Press and hold the switch to turn OFF the PWM output. Release the switch to turn ON the PWM output.

Design and Implementation

Figure 1 shows the PSoC Creator schematics of this code example. This code example uses PWM Component.

Figure 1. PSoC Creator Schematic of Code Example



All functionality for this code example is implemented in hardware. The only firmware required is to configure and enable the PWM. After that, the CPU enters an idle loop.

This code example was created to operate completely in the hardware peripherals of the PSoC device, specifically the universal digital blocks (UDBs) and fixed-function PWM. This frees the CPU to handle other tasks. The UDBs contain the inverter connecting the pin to the kill input of the PWM. Using the UDBs in PSoC allows you to design full circuits without external components.

Components and Settings

Table 1 lists the PSoC Creator Components used in this example and their placement.

Table 1. PSoC Creator Components

Component	Instance Name	Purpose	Non-default Settings
PWM	PWM_1	Generate square wave and bring out the signal to GPIO	Fixed Function One Output Period = 100 counts, 1 sec Compare = 50 counts, Greater than
Inverter	not_1	Invert the output of Digital Input Pin	-
Clock	clock_1	Drive the PWM at 100 Hz	100 Hz
Digital Input Pin	Kill_Switch	Stop the PWM signal	Initial drive state: High (1)
Digital Output Pin	PWM_Out	Drive the PWM signal to LED	Show External Terminal

Table 2 shows the pin selections for this code example, which is targeted at the CY8CKIT-059 Prototyping Kit. To target the project at other PSoC development kits, go to the *CE195352_PSoC_5LP_Blinking_LED.cydwr* file and change the pin assignments accordingly.

Table 2. Pin Selections

Pin Name	Location
Kill_Switch	P2[2]
PWM_Out	P2[1]

Reusing This Example

This code example is designed to run on CY8CKIT-059. To port the design to a different PSoC device, kit, or both, change the target device in **Device Selector**, and update the pin assignments in the **Design Wide Resources Pins** settings as needed.

Related Documents

Application Notes	
AN77759 – Getting Started with PSoC 5LP	Describes the PSoC 5LP architecture and development environment, and shows how to create a simple design using PSoC Creator.
PSoC Creator Component Datasheet	
PWM	Details the use of the PWM Component
Device Documentation	
PSoC 5LP Datasheets	PSoC 5LP Technical Reference Manuals
Development Kit (DVK) Documentation	
PSoC 3 and PSoC 5LP Kits	

PSoC Resources

Cypress provides a wealth of data at www.cypress.com to help you select the right PSoC device for your design and quickly and effectively integrate it into your design. For a comprehensive list of resources, see [KBA86521 – How to Design with PSoC 3, PSoC 4, and PSoC 5LP](#). The following is an abbreviated list:

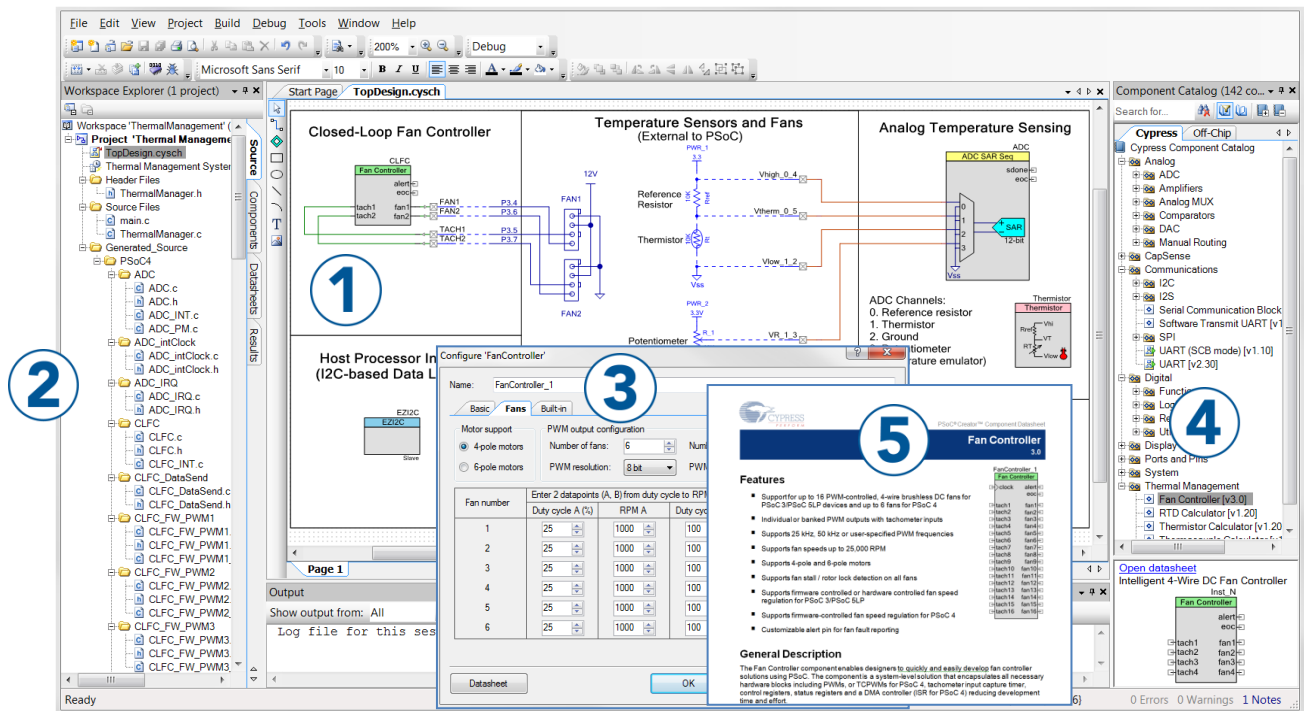
- **Overview:** [PSoC Portfolio](#), [PSoC Roadmap](#)
- **Product Selectors:** [PSoC 1](#), [PSoC 3](#), [PSoC 4](#), [PSoC 5LP](#), or [PSoC 6](#). In addition, [PSoC Creator](#) includes a device selection tool.
- **Datasheets:** Describe and provide electrical specifications for the PSoC device families.
- **CapSense Design Guides:** Learn how to design capacitive touch-sensing applications.
- **Application Notes:** Cover a broad range of topics, from basic to advanced level.
- **Code Examples:** for [PSoC 3](#), [PSoC 4](#), and [PSoC 5LP](#); or for [PSoC 6](#).
- **PSoC Technical Reference Manuals (TRM):** Provide detailed descriptions of the architecture and registers for PSoC device family.
- **Training Videos:** These videos provide guidance on getting started with various Cypress product families and tools.
- **Development Kits:** Some examples include:
 - [PSoC 6 BLE Pioneer Kit](#) is a low-cost hardware platform that enables design and debug of the PSoC 63 series. It comes with an E-Ink display shield board.
 - [CY8CKIT-042](#) and [CY8CKIT-040](#), Pioneer kits, are easy-to-use and inexpensive development platforms. These kits include connectors for Arduino™ compatible shields and Digilent® Pmod™ daughter cards.
 - [CY8CKIT-049](#) is a series of very low-cost prototyping platform for sampling PSoC 4 devices.
 - [CY8CKIT-030](#) and [CY8CKIT-050](#) are designed for analog performance. They enable you to evaluate, develop, and prototype high-precision analog, low-power, and low-voltage applications powered by PSoC 3 and PSoC 5LP, respectively.
 - [CY8CKIT-001](#) is a common development platform for all PSoC family devices.
 - [CY8CKIT-059](#) is a rapid prototyping kit for PSoC 5LP.
- The [MiniProg3](#) device provides an interface for flash programming and debug.

PSoC Creator

PSoC Creator is a free, Windows based Integrated Design Environment (IDE). It enables you to design system hardware and firmware concurrently based on PSoC 3, PSoC 4, PSoC 5LP, and PSoC 6 MCU (see Figure 2). With PSoC Creator, you can do the following:

1. Drag and drop Components to build your hardware system design in the main design workspace.
2. Codesign your application firmware with the PSoC hardware.
3. Configure Components using configuration tools.
4. Explore the library of 100+ Components.
5. Review Component datasheets.

Figure 2. PSoC Creator Features



Document History

Document Title: CE195352 – Fixed-Function PWM with PSoC 5LP

Document Number: 001-95352

Revision	ECN	Orig. of Change	Submission Date	Description of Change
**	4753117	KLMZ	01/17/2016	New spec
*A	6012100	SAGA	01/16/2018	Updated template

Worldwide Sales and Design Support

Cypress maintains a worldwide network of offices, solution centers, manufacturer's representatives, and distributors. To find the office closest to you, visit us at [Cypress Locations](#).

Products

Arm® Cortex® Microcontrollers	cypress.com/arm
Automotive	cypress.com/automotive
Clocks & Buffers	cypress.com/clocks
Interface	cypress.com/interface
Internet of Things	cypress.com/iot
Memory	cypress.com/memory
Microcontrollers	cypress.com/mcu
PSoC	cypress.com/psoc
Power Management ICs	cypress.com/pmic
Touch Sensing	cypress.com/touch
USB Controllers	cypress.com/usb
Wireless Connectivity	cypress.com/wireless

PSoC® Solutions

[PSoC 1](#) | [PSoC 3](#) | [PSoC 4](#) | [PSoC 5LP](#) | [PSoC 6 MCU](#)

Cypress Developer Community

[Community Forums](#) | [Projects](#) | [Videos](#) | [Blogs](#) | [Training](#) | [Components](#)

Technical Support

cypress.com/support

All other trademarks or registered trademarks referenced herein are the property of their respective owners.



© Cypress Semiconductor Corporation, 2016-2018. This document is the property of Cypress Semiconductor Corporation and its subsidiaries, including Spansion LLC ("Cypress"). This document, including any software or firmware included or referenced in this document ("Software"), is owned by Cypress under the intellectual property laws and treaties of the United States and other countries worldwide. Cypress reserves all rights under such laws and treaties and does not, except as specifically stated in this paragraph, grant any license under its patents, copyrights, trademarks, or other intellectual property rights. If the Software is not accompanied by a license agreement and you do not otherwise have a written agreement with Cypress governing the use of the Software, then Cypress hereby grants you a personal, non-exclusive, nontransferable license (without the right to sublicense) (1) under its copyright rights in the Software (a) for Software provided in source code form, to modify and reproduce the Software solely for use with Cypress hardware products, only internally within your organization, and (b) to distribute the Software in binary code form externally to end users (either directly or indirectly through resellers and distributors), solely for use on Cypress hardware product units, and (2) under those claims of Cypress's patents that are infringed by the Software (as provided by Cypress, unmodified) to make, use, distribute, and import the Software solely for use with Cypress hardware products. Any other use, reproduction, modification, translation, or compilation of the Software is prohibited.

TO THE EXTENT PERMITTED BY APPLICABLE LAW, CYPRESS MAKES NO WARRANTY OF ANY KIND, EXPRESS OR IMPLIED, WITH REGARD TO THIS DOCUMENT OR ANY SOFTWARE OR ACCOMPANYING HARDWARE, INCLUDING, BUT NOT LIMITED TO, THE IMPLIED WARRANTIES OF MERCHANTABILITY AND FITNESS FOR A PARTICULAR PURPOSE. No computing device can be absolutely secure. Therefore, despite security measures implemented in Cypress hardware or software products, Cypress does not assume any liability arising out of any security breach, such as unauthorized access to or use of a Cypress product. In addition, the products described in these materials may contain design defects or errors known as errata which may cause the product to deviate from published specifications. To the extent permitted by applicable law, Cypress reserves the right to make changes to this document without further notice. Cypress does not assume any liability arising out of the application or use of any product or circuit described in this document. Any information provided in this document, including any sample design information or programming code, is provided only for reference purposes. It is the responsibility of the user of this document to properly design, program, and test the functionality and safety of any application made of this information and any resulting product. Cypress products are not designed, intended, or authorized for use as critical components in systems designed or intended for the operation of weapons, weapons systems, nuclear installations, life-support devices or systems, other medical devices or systems (including resuscitation equipment and surgical implants), pollution control or hazardous substances management, or other uses where the failure of the device or system could cause personal injury, death, or property damage ("Unintended Uses"). A critical component is any component of a device or system whose failure to perform can be reasonably expected to cause the failure of the device or system, or to affect its safety or effectiveness. Cypress is not liable, in whole or in part, and you shall and hereby do release Cypress from any claim, damage, or other liability arising from or related to all Unintended Uses of Cypress products. You shall indemnify and hold Cypress harmless from and against all claims, costs, damages, and other liabilities, including claims for personal injury or death, arising from or related to any Unintended Uses of Cypress products.

Cypress, the Cypress logo, Spansion, the Spansion logo, and combinations thereof, WICED, PSoC, CapSense, EZ-USB, F-RAM, and Traveo are trademarks or registered trademarks of Cypress in the United States and other countries. For a more complete list of Cypress trademarks, visit cypress.com. Other names and brands may be claimed as property of their respective owners.