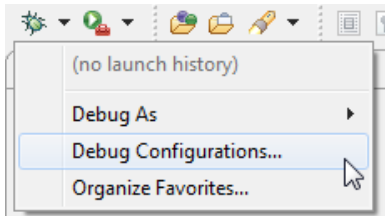


WICED Wi-Fi Forums: Creating and/or Editing Debug Configurations

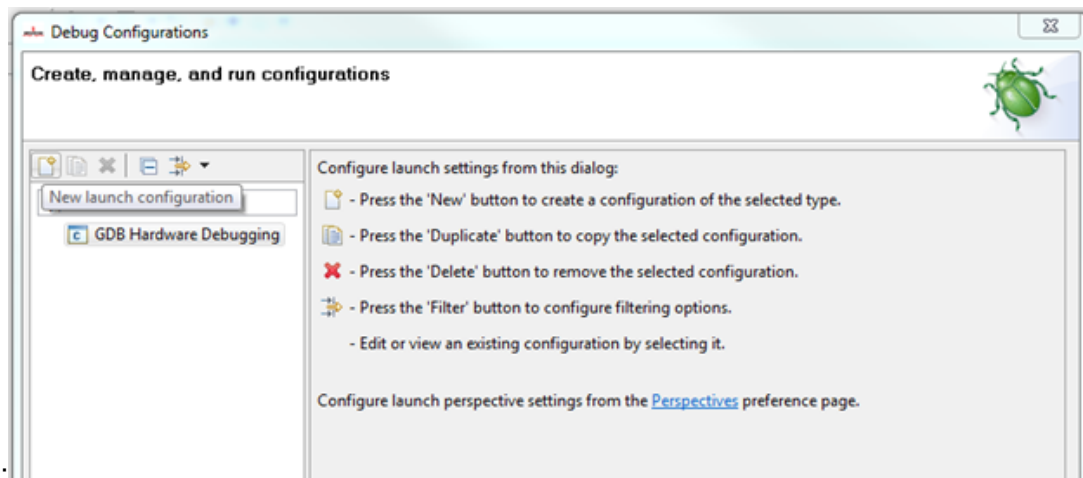
Posted by [seyhan](#) May 9, 2014

For versions: 2.4.0, 2.4.1 and 3.1.2

To create or edit the debug configuration click on the down arrow next to the green bug icon and select “Debug Configurations…”.



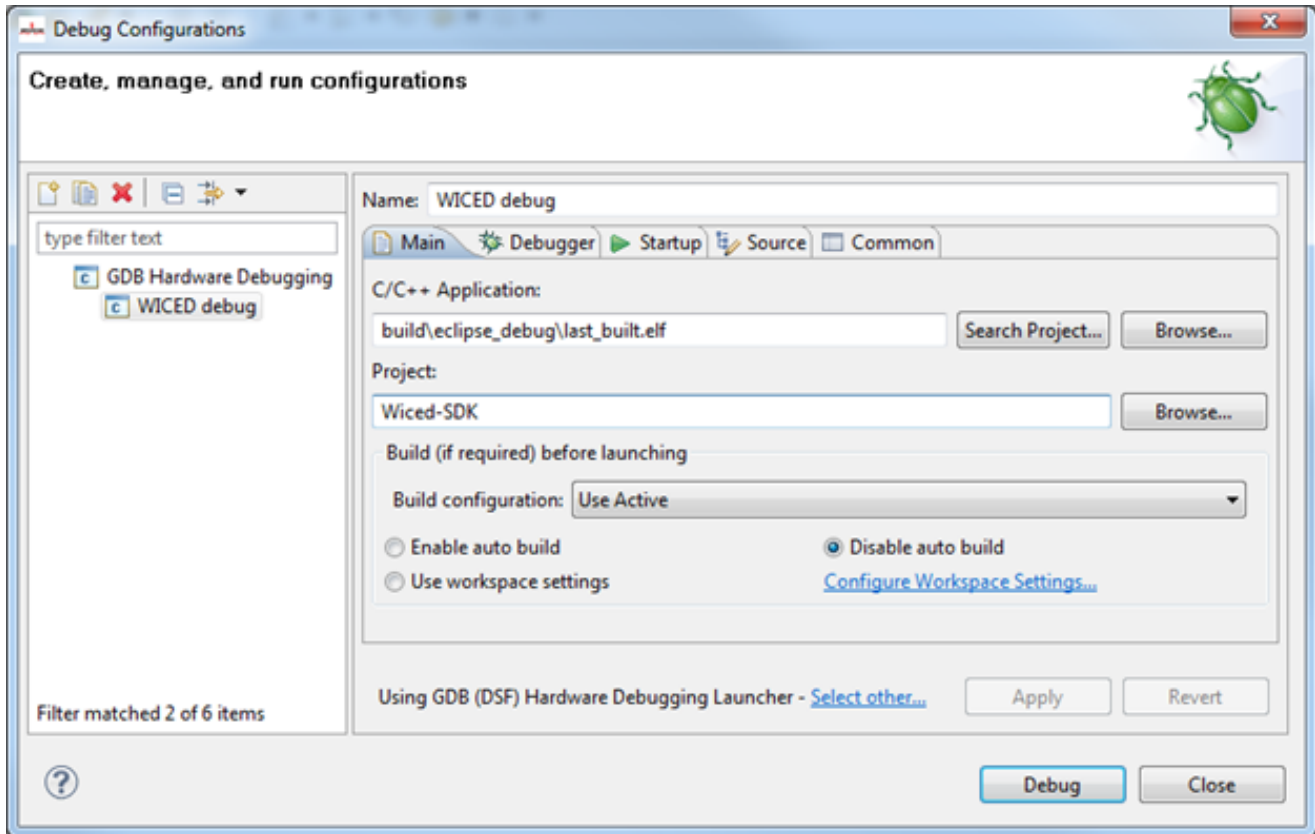
If none exist, create a new debug configuration by selecting “GDB Hardware Debugging” then selecting “New launch configuration” icon. If the debug configuration already exists, select the debug configuration you would



like to update:

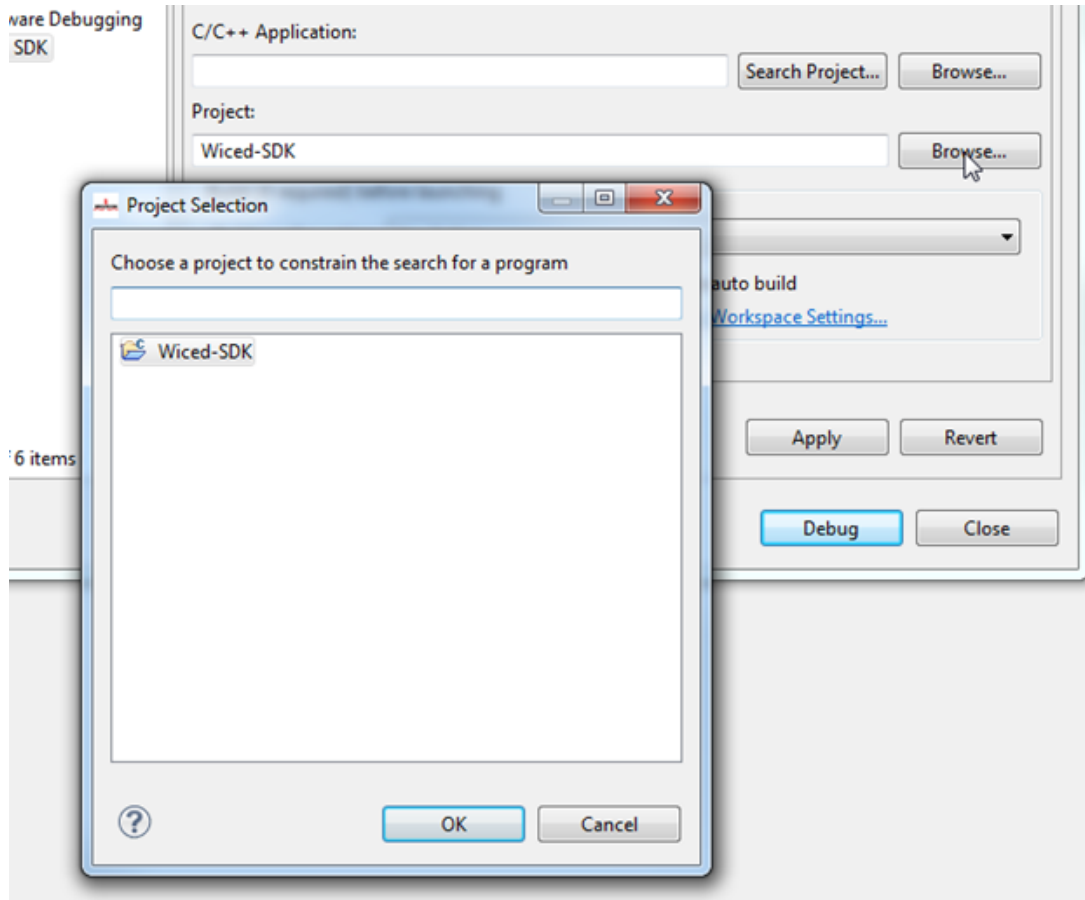
Select the “Main” tab and set the selections as below:

You may update the default name as you like. In this example the name “WICED debug” is used.

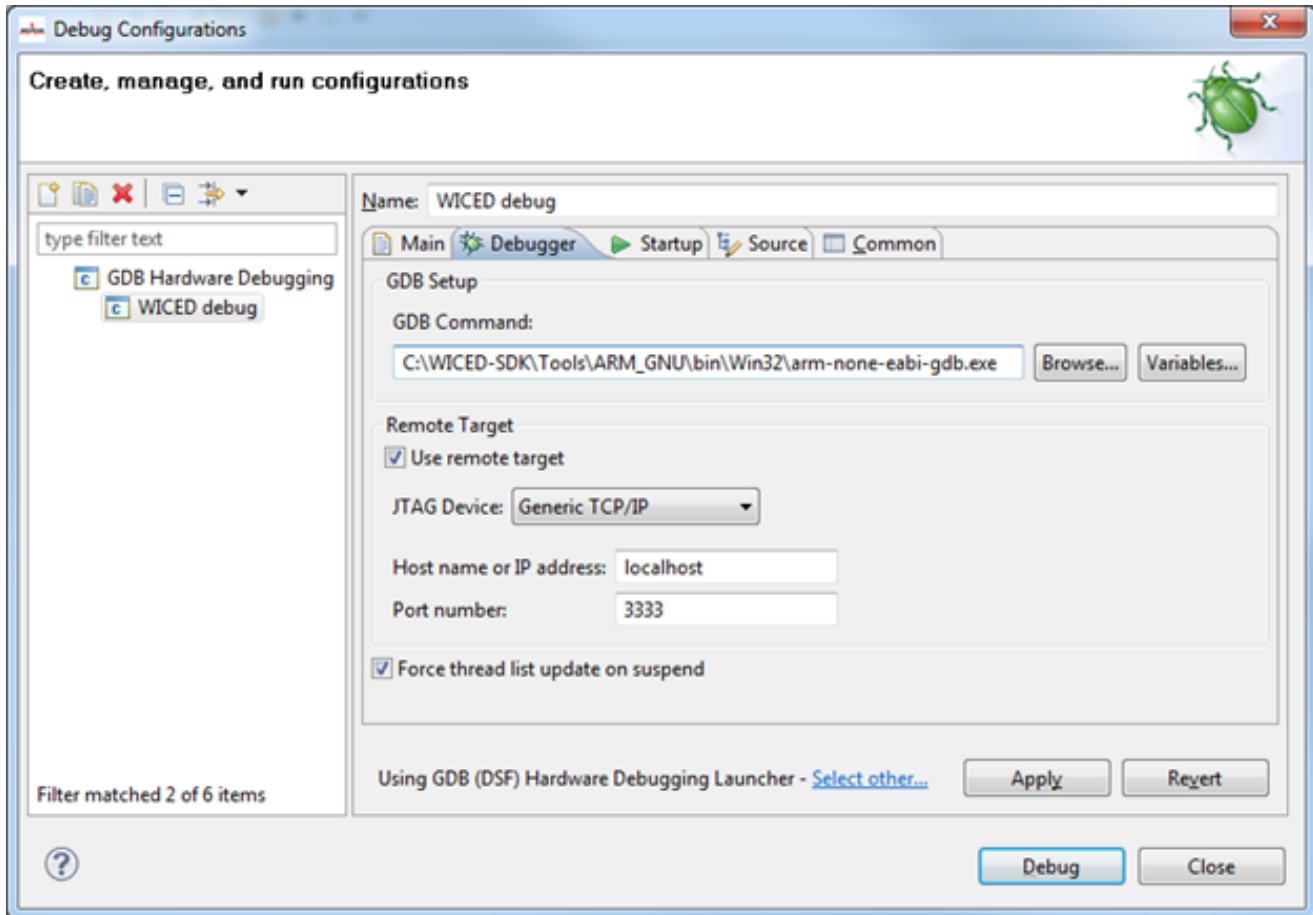


Select the "Main" tab and select a project to debug if more than one project is present.

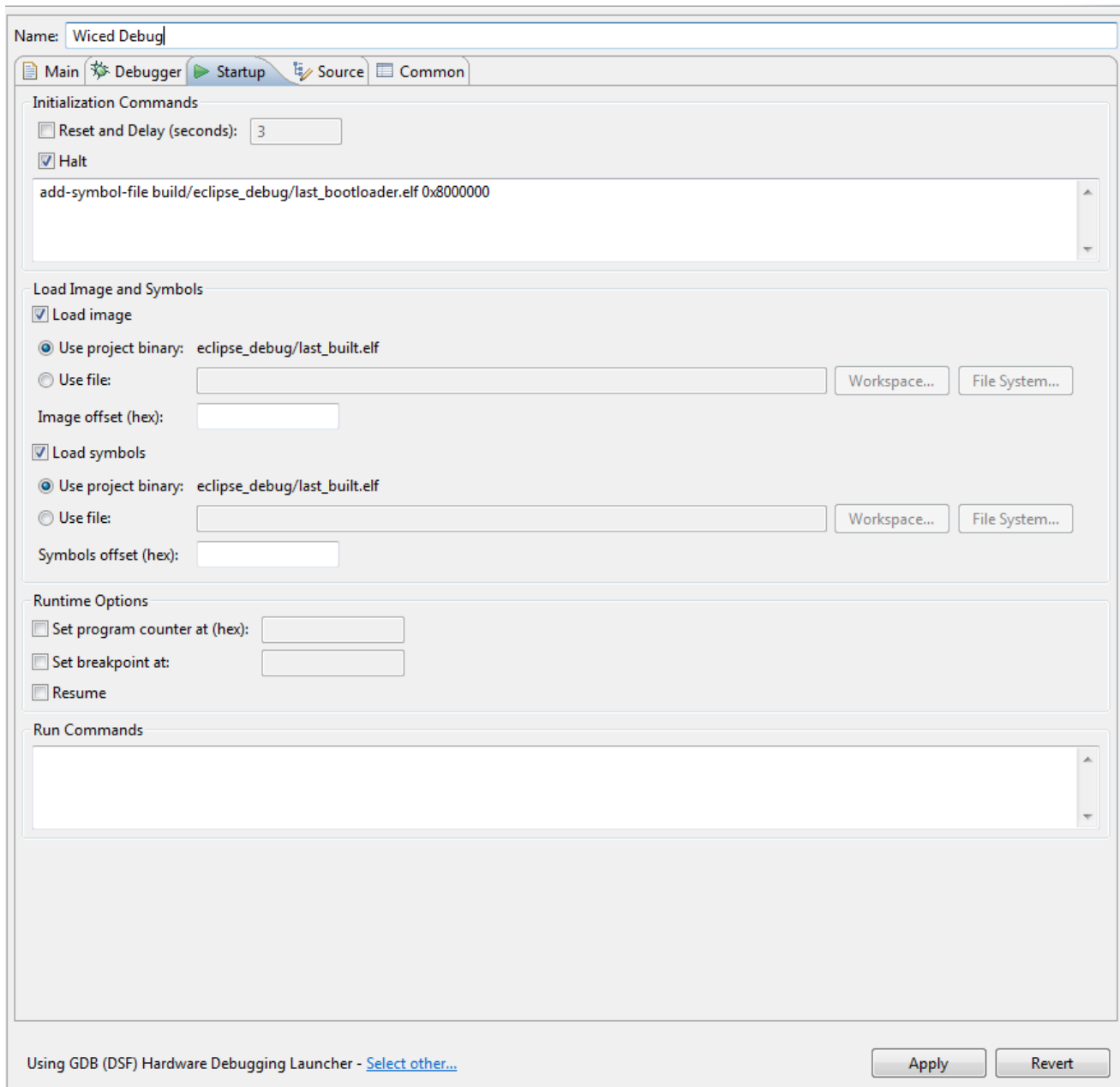
WICED Wi-Fi Forums: Creating and/or Editing Debug Configurations



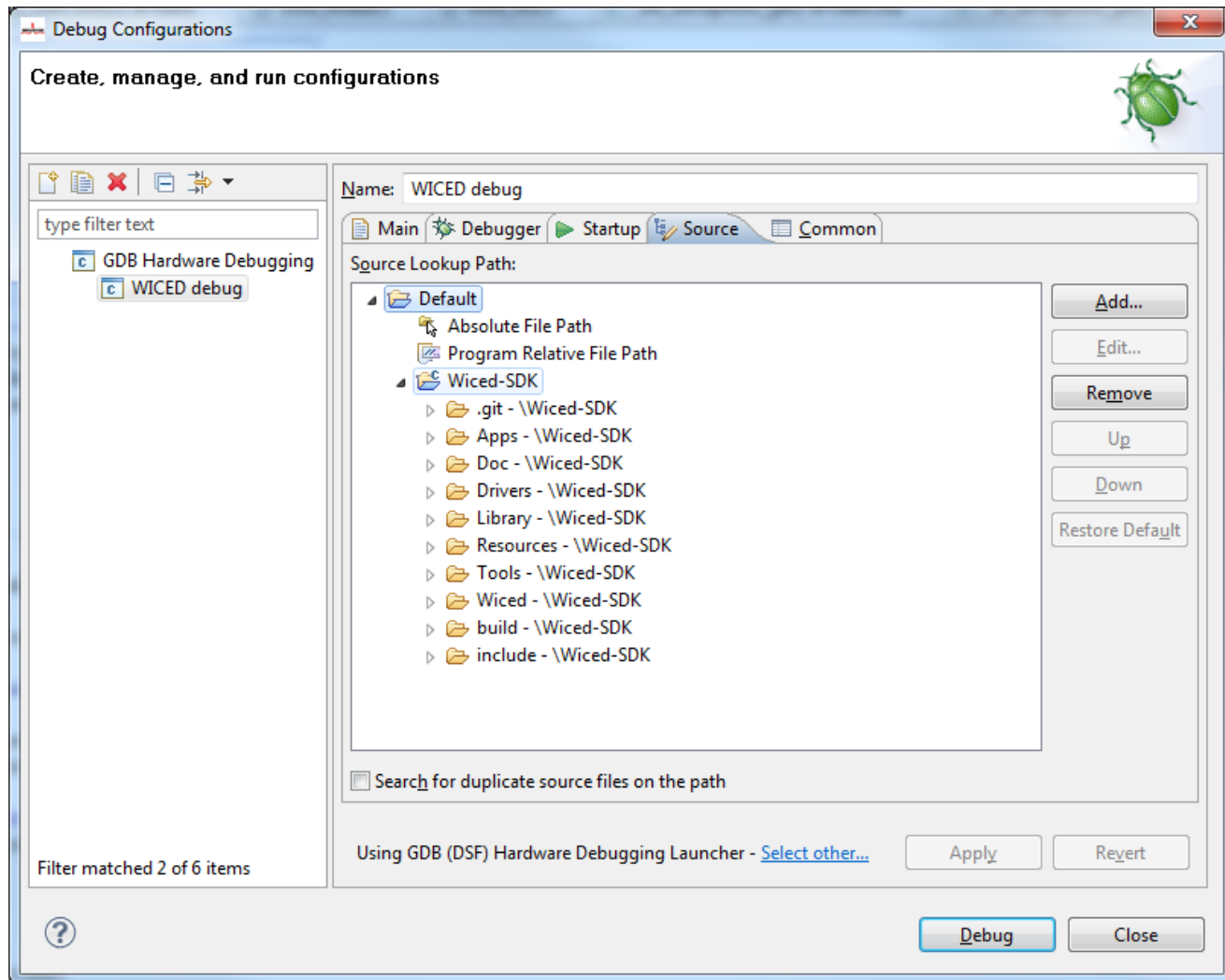
Select the “Debugger” tab and set “GDB Command” to “<Wiced Project Dir>\Tools\ARM_GNU\bin\Win32\arm-none-eabi-gdb.exe” then set the rest as below:



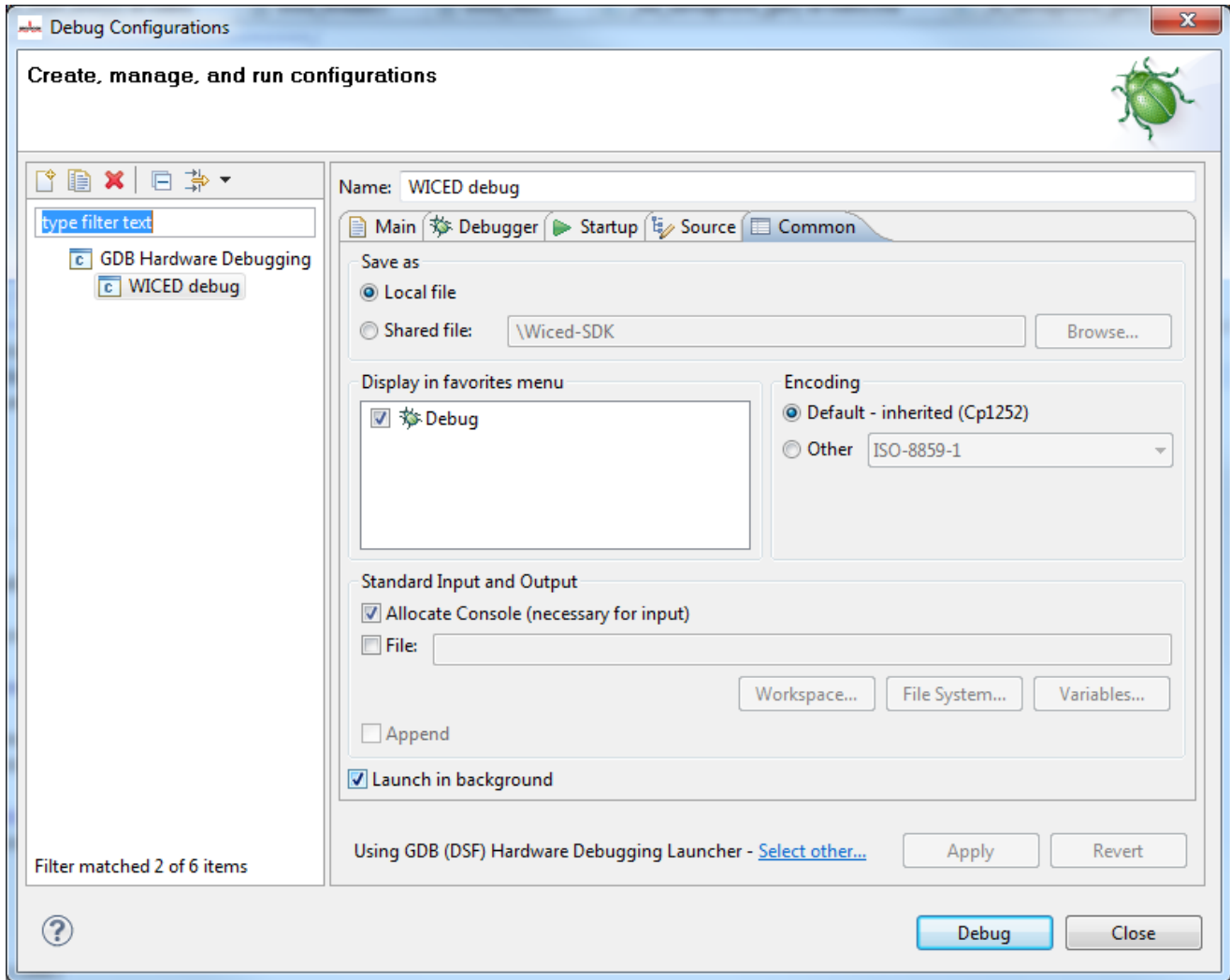
Select the "Startup" tab and set the selections as below:



Select the "Source" tab and set the selections as below:



Select the "Common" tab and set the selections as below:



1219 Views Tags: [wiced](#), [debug](#), [jtag](#), [gdb](#)