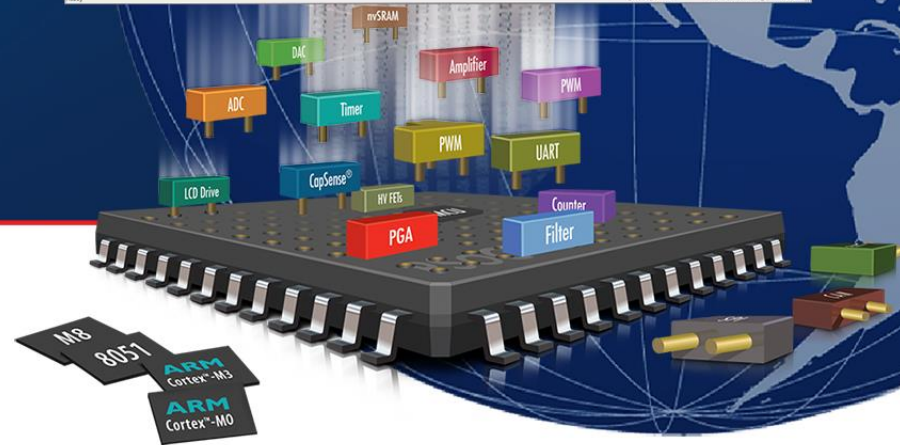
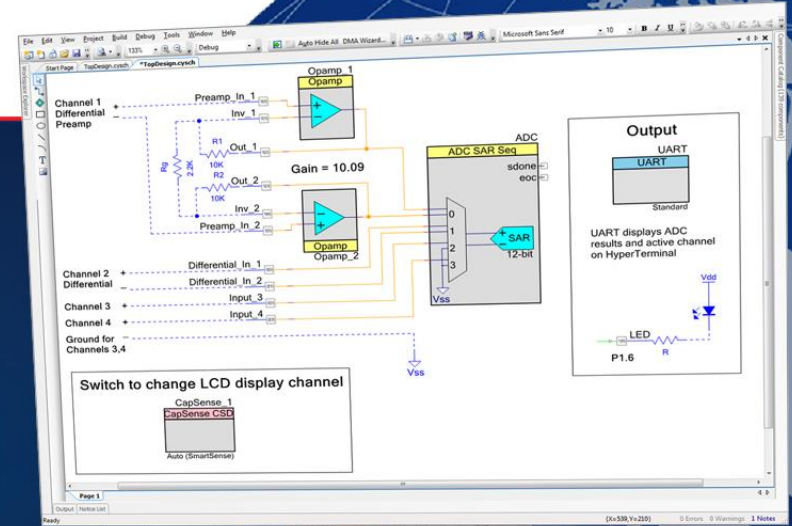


USB driver for MB2146-07-E

Clean uninstallation

01/30/2017



First, please remove an **MB2146-07-E** from PC.

1. Uninstall the old Driver.

- Execute batch file. (for V11)
- Execute uninstaller. (for V12)

2. Delete the DLL files.

3. Restart Windows

1. Uninstall the old Driver.

If the old USB driver for 64 bit is installed, it may not change to this USB driver.

Remove the evaluation tool from PC. And use the batch file of old package for uninstallation.

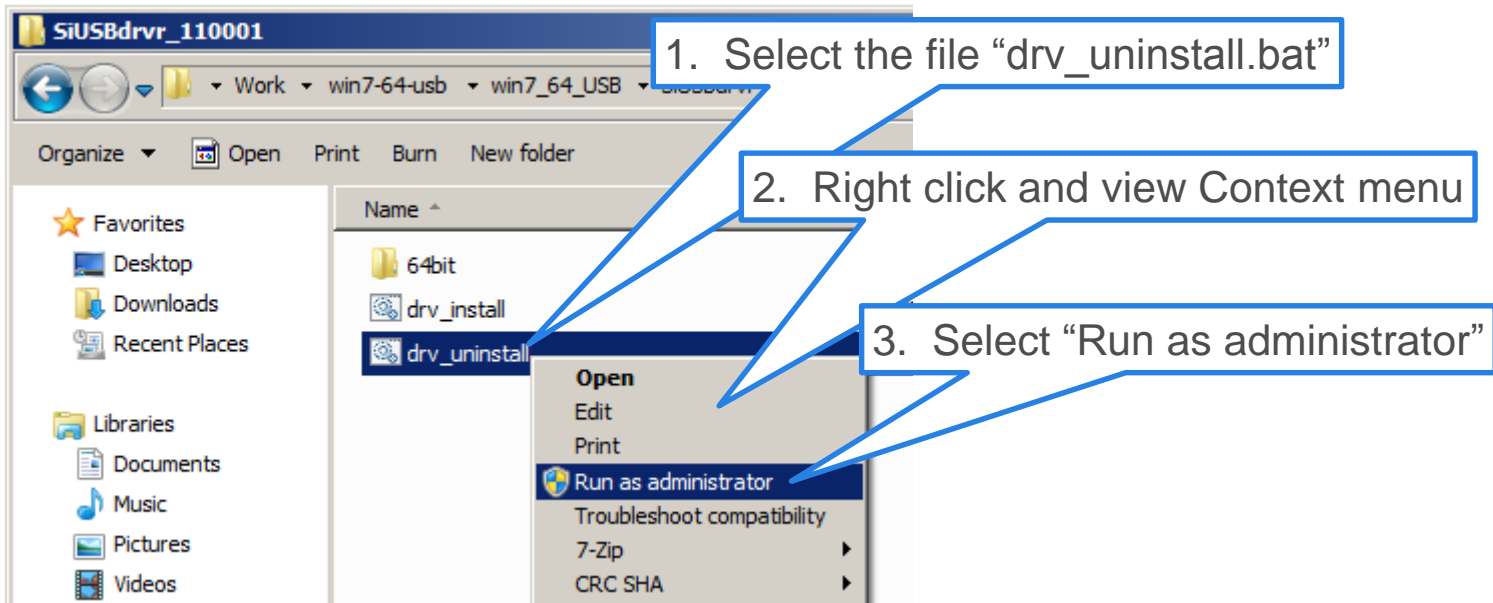
See the description of the old package for usage of uninstallation.

Execute batch file.(for V11)

the device driver (win7-64-usb.zip [2,308 KB]) downloaded from <http://www.cypress.com/documentation/software-and-drivers/windows-7-operation-released-softune-product>

Execution of batch file for un-install

Right click and “Run as administrator” the “drv_uninstall.bat” batch file.



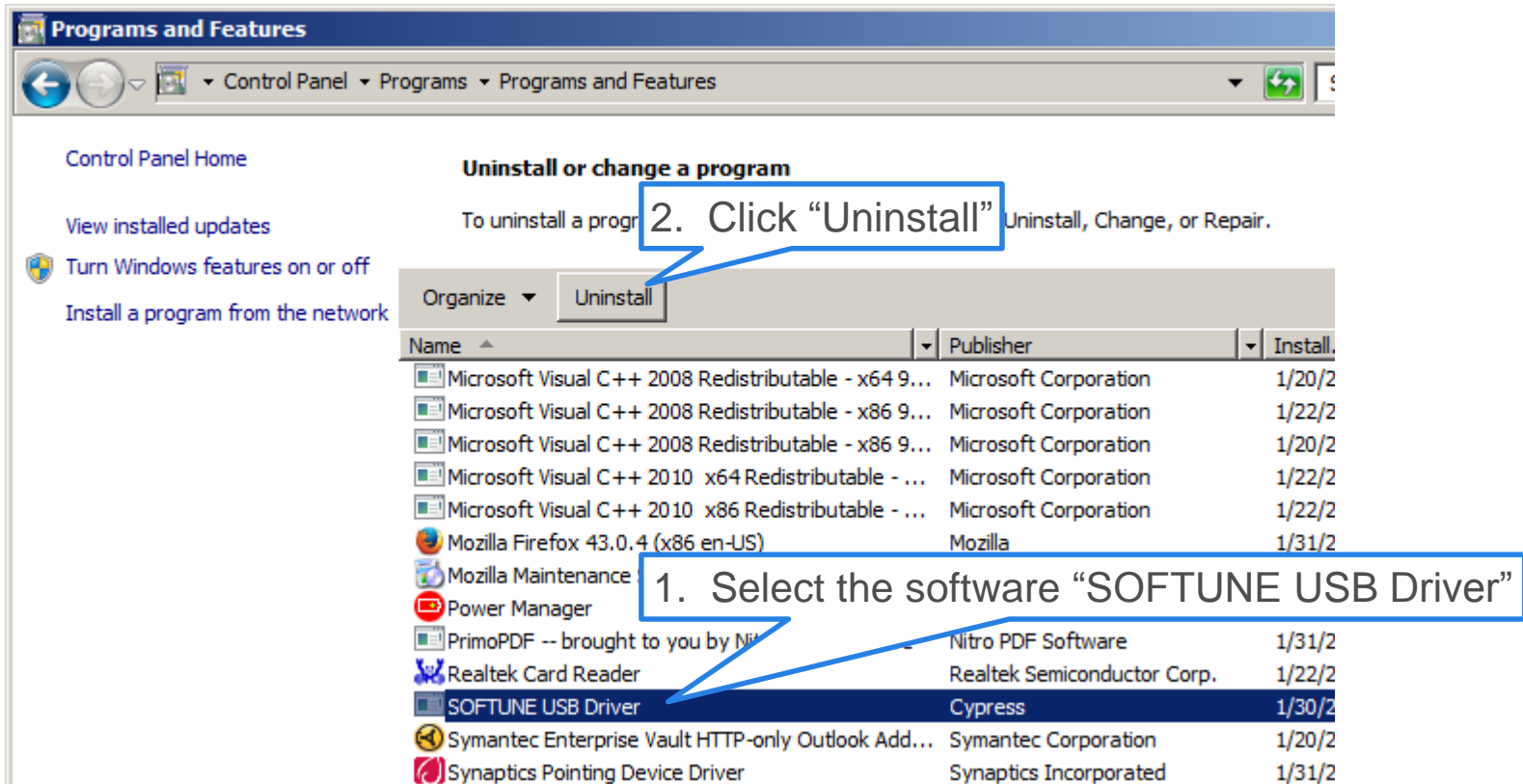
Execute uninstaller.(for V12)

the device driver (softune_usb_driver_v12001.zip [3,860 KB])

Navigate to Windows Control Panel.

And select Program > Uninstall a Program.

And select this software from the list and click Uninstall.



Control Panel Home

View installed updates

Turn Windows features on or off

Install a program from the network

Uninstall or change a program

To uninstall a program, click Uninstall, Change, or Repair.

Organize Uninstall

Name	Publisher	Install
Microsoft Visual C++ 2008 Redistributable - x64 9...	Microsoft Corporation	1/20/2
Microsoft Visual C++ 2008 Redistributable - x86 9...	Microsoft Corporation	1/22/2
Microsoft Visual C++ 2008 Redistributable - x86 9...	Microsoft Corporation	1/20/2
Microsoft Visual C++ 2010 x64 Redistributable - ...	Microsoft Corporation	1/22/2
Microsoft Visual C++ 2010 x86 Redistributable - ...	Microsoft Corporation	1/22/2
Mozilla Firefox 43.0.4 (x86 en-US)	Mozilla	1/31/2
Mozilla Maintenance		
Power Manager		
PrimoPDF -- brought to you by Nitro PDF Software	Nitro PDF Software	1/31/2
Realtek Card Reader	Realtek Semiconductor Corp.	1/22/2
SOFTUNE USB Driver	Cypress	1/30/2
Symantec Enterprise Vault HTTP-only Outlook Add...	Symantec Corporation	1/20/2
Synaptics Pointing Device Driver	Synaptics Incorporated	1/31/2

1. Select the software "SOFTUNE USB Driver"

2. Click "Uninstall"

2. Delete the DLL files.

The uninstaller does not delete the files, so the files will be kept. Delete the following files.

C:¥Windows¥System32¥drivers

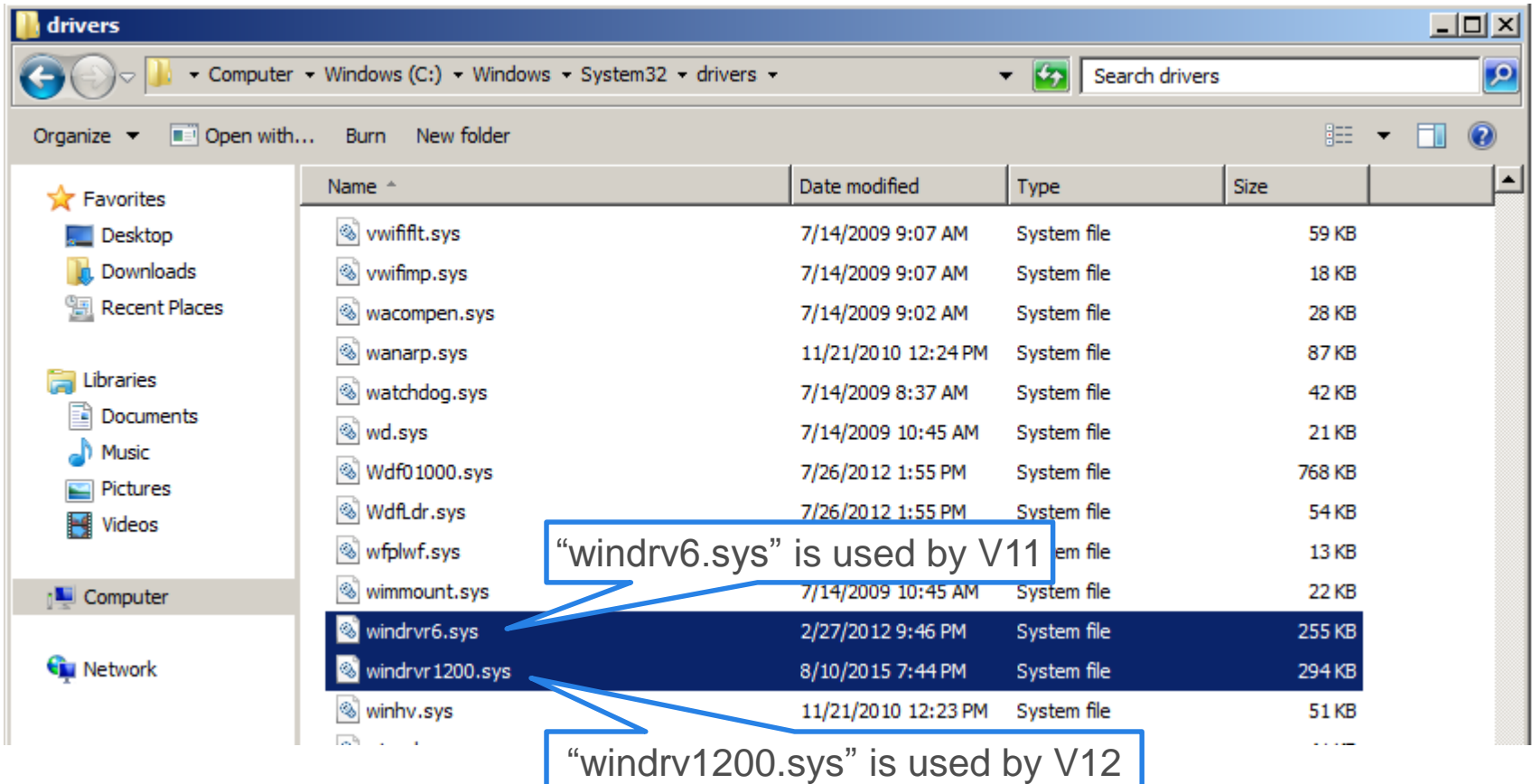
- windrvr6.sys
- windrvr1200.sys

C:¥Windows¥SysWOW64

- wdapi1100.dll
- wdapi1200.dll
- SiUSB.DLL
- SiUSBB2.DLL
- SiUSBo.DLL

Windows\System32\drivers

Delete the selected files that are blue back.



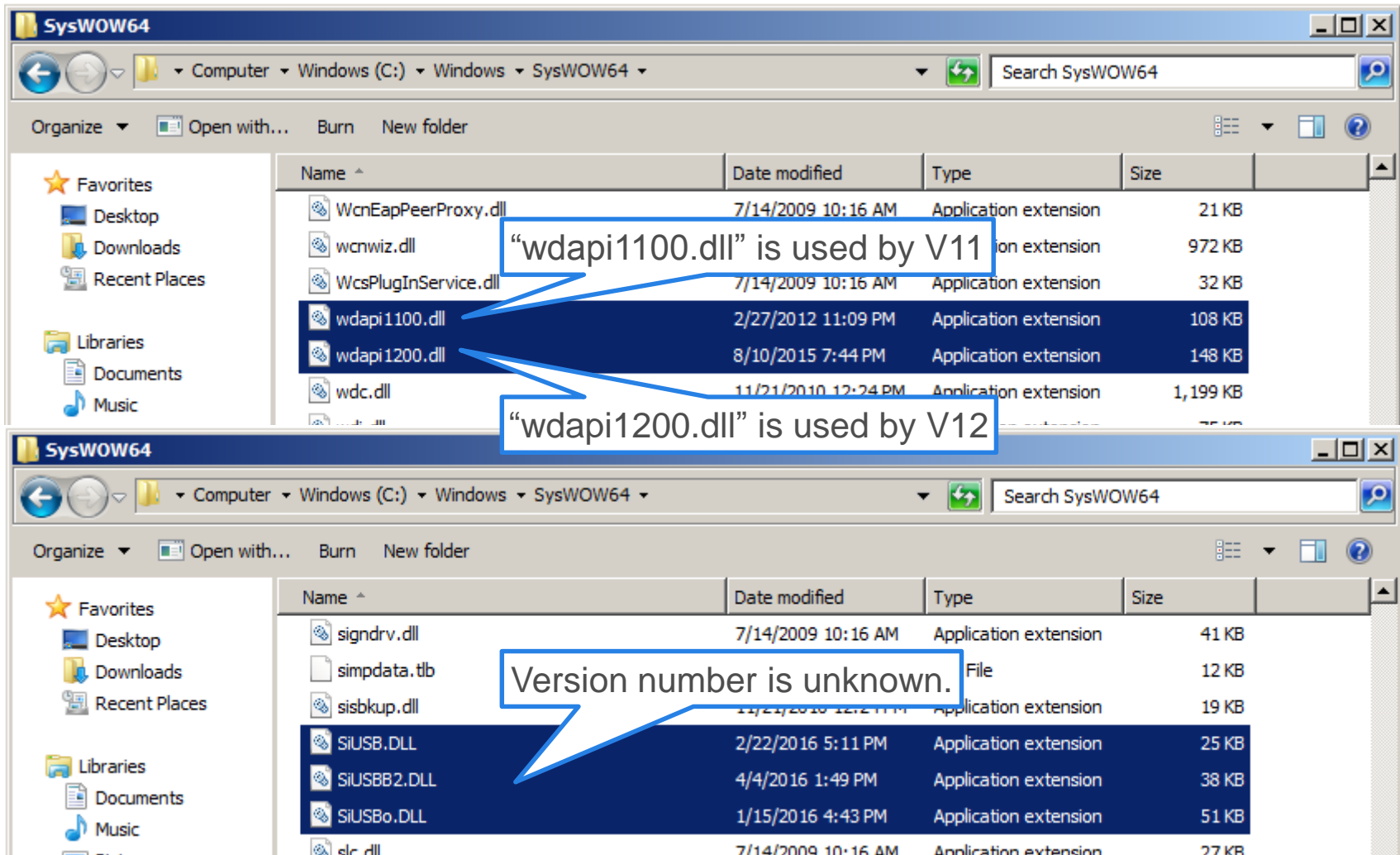
Name	Date modified	Type	Size
vwifffit.sys	7/14/2009 9:07 AM	System file	59 KB
vwifimp.sys	7/14/2009 9:07 AM	System file	18 KB
wacompen.sys	7/14/2009 9:02 AM	System file	28 KB
wanarp.sys	11/21/2010 12:24 PM	System file	87 KB
watchdog.sys	7/14/2009 8:37 AM	System file	42 KB
wd.sys	7/14/2009 10:45 AM	System file	21 KB
Wdf01000.sys	7/26/2012 1:55 PM	System file	768 KB
Wdfldr.sys	7/26/2012 1:55 PM	System file	54 KB
wfplwf.sys		System file	13 KB
wimmount.sys	7/14/2009 10:45 AM	System file	22 KB
windrv6.sys	2/27/2012 9:46 PM	System file	255 KB
windrvr1200.sys	8/10/2015 7:44 PM	System file	294 KB
winhv.sys	11/21/2010 12:23 PM	System file	51 KB

“windrv6.sys” is used by V11

“windrvr1200.sys” is used by V12

Windows\System32\drivers

Delete the selected files that are blue back.



Two screenshots of Windows Explorer windows showing files in the SysWOW64 directory. The top window shows files like WcnEapPeerProxy.dll, wcnwiz.dll, WcsPlugInService.dll, wdapi1100.dll, wdapi1200.dll, and wdc.dll. Callouts indicate that "wdapi1100.dll" is used by V11 and "wdapi1200.dll" is used by V12. The bottom window shows files like signdrv.dll, simpdata.tlb, sisbkup.dll, SiUSB.DLL, SiUSB2.DLL, SiUSB0.DLL, and elc.dll. A callout indicates that the version number for SiUSB.DLL is unknown.

Name	Date modified	Type	Size
WcnEapPeerProxy.dll	7/14/2009 10:16 AM	Application extension	21 KB
wcnwiz.dll		Application extension	972 KB
WcsPlugInService.dll	7/14/2009 10:16 AM	Application extension	32 KB
wdapi1100.dll	2/27/2012 11:09 PM	Application extension	108 KB
wdapi1200.dll	8/10/2015 7:44 PM	Application extension	148 KB
wdc.dll	11/21/2010 12:24 PM	Application extension	1,199 KB

Name	Date modified	Type	Size
signdrv.dll	7/14/2009 10:16 AM	Application extension	41 KB
simpdata.tlb		File	12 KB
sisbkup.dll		Application extension	19 KB
SiUSB.DLL	2/22/2016 5:11 PM	Application extension	25 KB
SiUSB2.DLL	4/4/2016 1:49 PM	Application extension	38 KB
SiUSB0.DLL	1/15/2016 4:43 PM	Application extension	51 KB
elc.dll	7/14/2009 10:16 AM	Application extension	27 KB

3. Restart Windows.

Please restart Windows.

