

## Debug configurations for jlink

### Run – Debug Configurations on Eclipse IDE

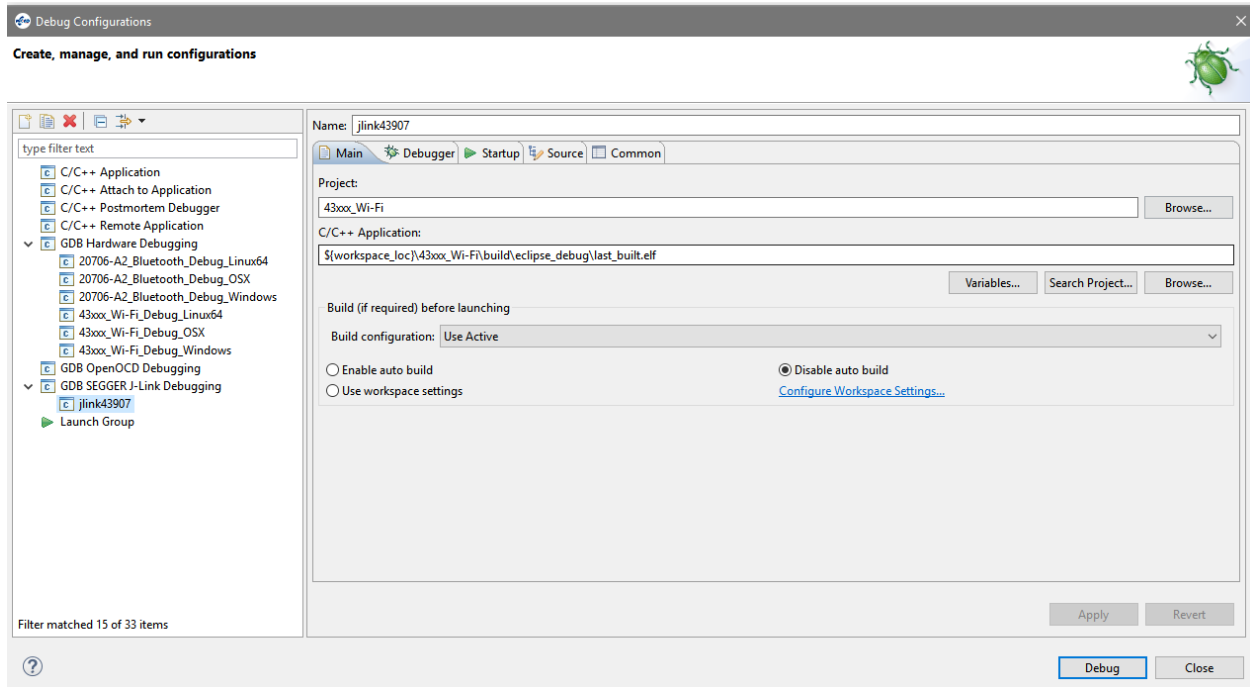


Figure 1 main tab of debug configurations

Enter the name as jlink43907. Enter the project details as shown in figure 1:

C/C++ Application: `${workspace_loc}\43xxx_Wi-Fi\build\eclipse_debug\last_built.elf`

Choose the debugger tab

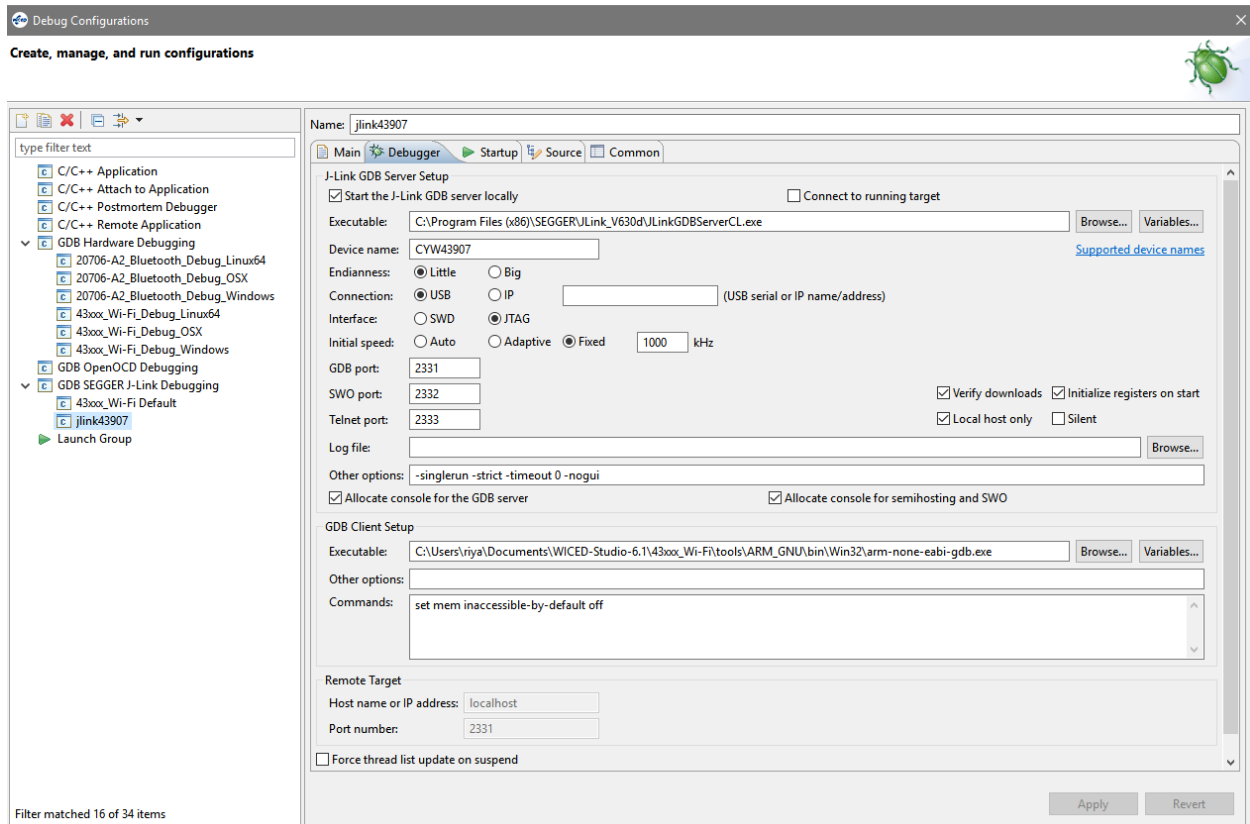


Figure 2 Debugger tab of debug configurations

Browse the JLink executable (JLinkGDBServerCL.exe) from the jlink installation folder.

Enter the device name as CYW43907, choose the interface as JTAG.

Choose the gdb executable arm-none-eabi-gdb.exe for GDB Client Setup: **`${workspace_loc}\43xxx_Wi-Fi\tools\ARM_GNU\bin\Win32\arm-none-eabi-gdb.exe`**

Enter the other settings as shown in the figure 2

In the startup tab, choose the JTAG/SWD speed as Fixed: 10000 Khz.

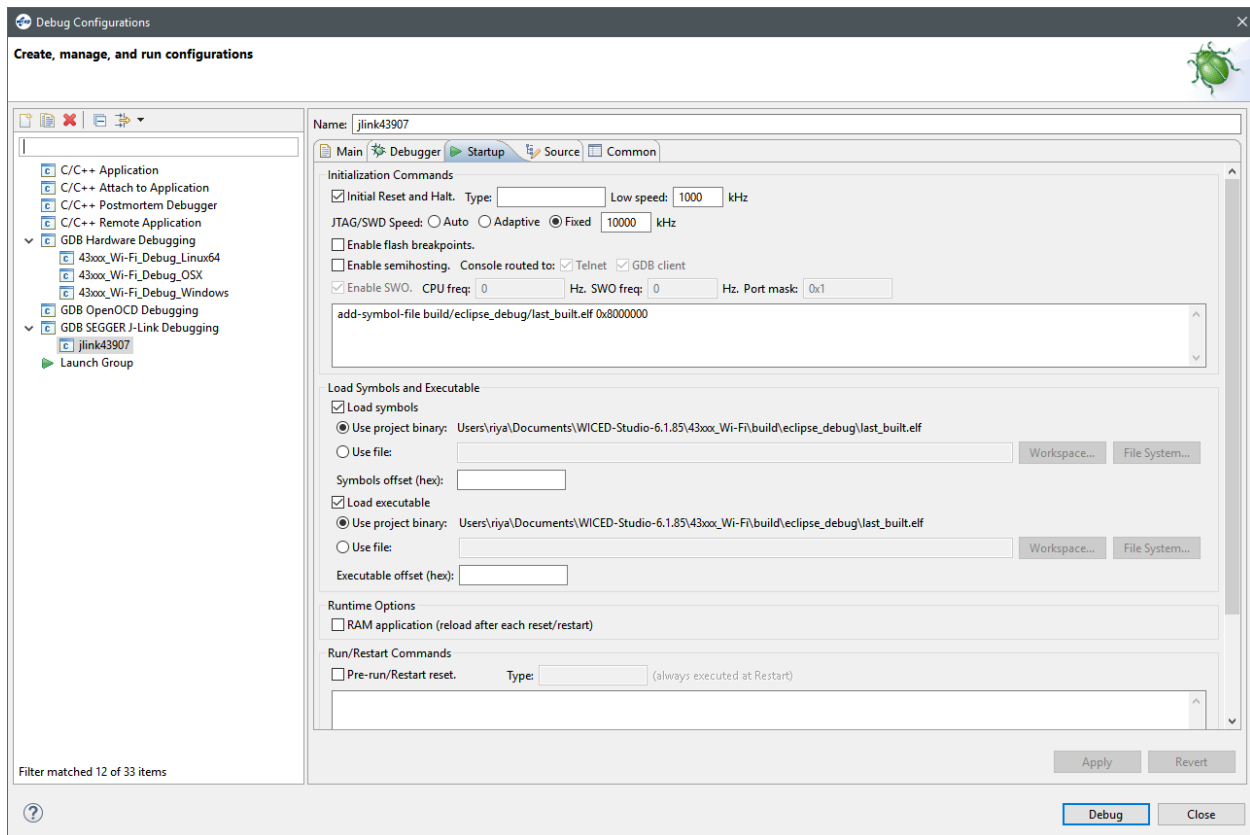


Figure 3 Startup tab in debug configurations

Add the initialization commands: **add-symbol-file build/eclipse\_debug/last\_built.elf 0x8000000**

No settings are required in the Source tab.

The common tab settings are as shown in figure 4.

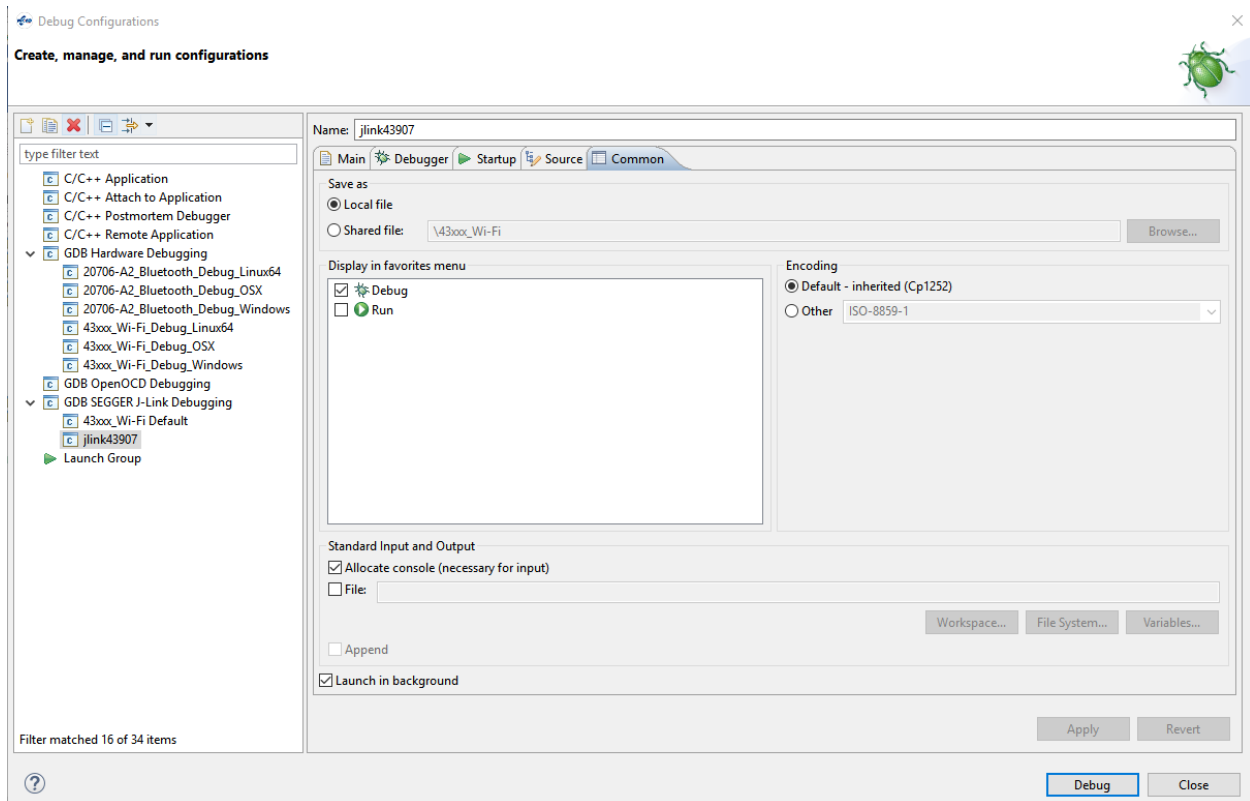

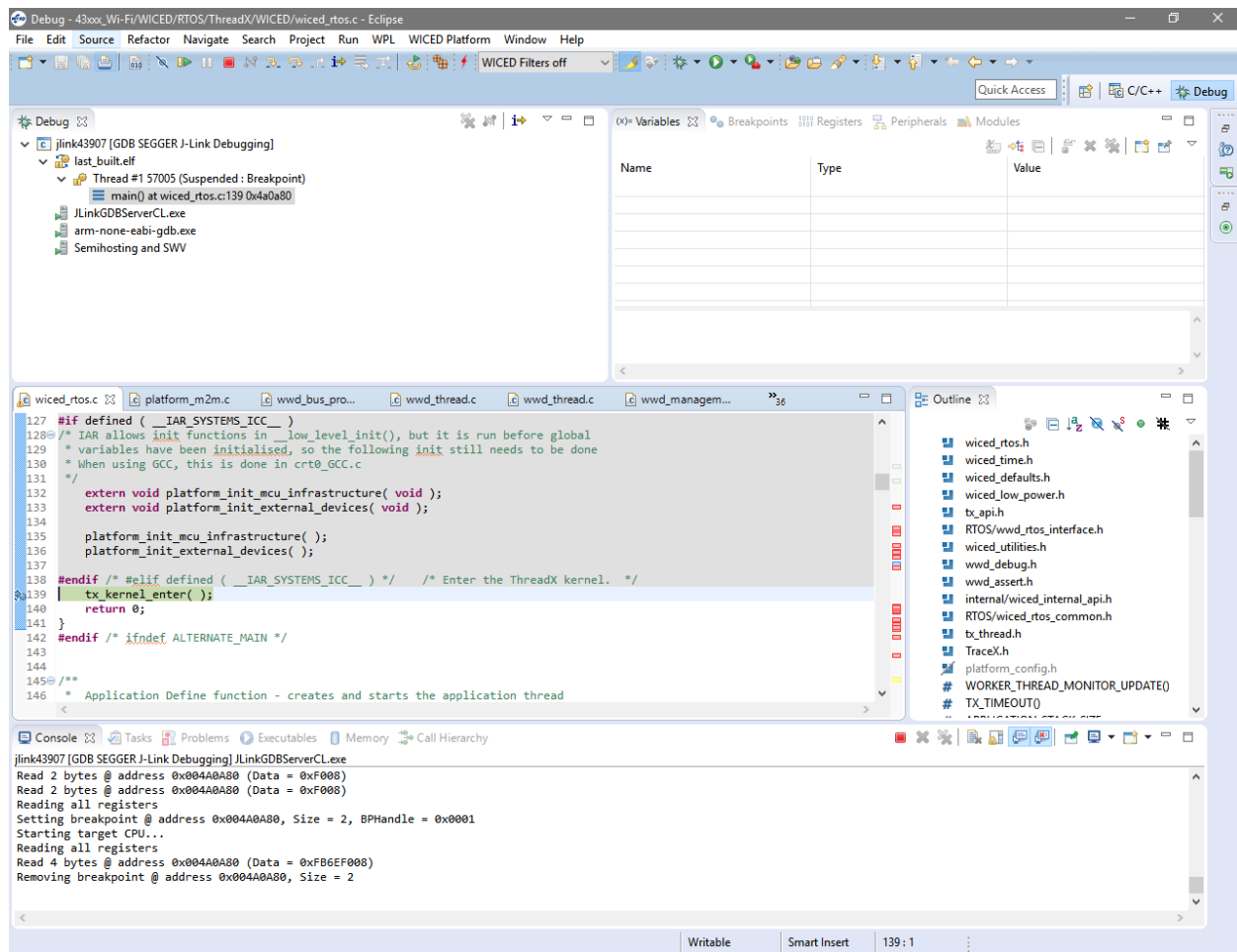


Figure 4 common tab in debug configurations

Click on debug. Click on Proceed/Yes on the dialog box that appears. Keep a breakpoint at `tx_kernel_enter()` in `wiced_rtos.c` and press the resume button .

The execution will halt at `tx_kernel_enter()`.



Place breakpoint in your application at desired location and resume debugging.